



ABC BOAT HIRE



— — — — — ABC — — — — —
CANAL BOAT
— — — — — HOLIDAYS — — — — —
2026

WWW.ABCBOATHIRE.COM

BOOK YOUR CANAL BOATING BREAK TODAY

CALL US ON 0330 300 0590 OR EMAIL info@abcboathire.com OR VISIT WWW.ABCBOATHIRE.COM

RELAX & ENJOY

Looking to escape to a slower pace of life on some of the UK's best inland waterways? With ABC Boat Hire holidays, you can explore the country from a whole new perspective, taking in the breathtaking sights Britain's waterside villages, towns and cities have to offer.

And yet, a slower pace doesn't have to mean a holiday without luxury. From onboard Wi-Fi to wider beds and many other modern amenities, you'll be able to cruise in comfort as you discover the hidden corners of Britain's waterways. Plus, with our prices also including an Accidental Damage Waiver, you'll be able to fully relax knowing there'll be no unexpected charges.

With almost 200 boats, 16 start points and over 1,500 miles of waterways to explore, it's time to start planning your best holiday yet.

Happy Boating

Haley Hadley

Haley Hadley | Marketing & Sales Director

THE COUNTRYSIDE ON YOUR DOORSTEP

- 4** PLANNING YOUR TRIP
- 6** A HISTORY OF GREAT HOLIDAYS
- 7** OUR BASES & MAP
- 8** BASES, ROUTES & SHORT BREAKS
- 40** YOUR BOAT
- 42** GUIDE TO SYMBOLS
- 44** BOAT LAYOUTS
- 57** ABC APP
- 58** YOUR QUESTIONS ANSWERED
- 60** MORE THAN JUST BOAT HIRE
- 62** HIRE PRICES
- 64** WHAT'S INCLUDED IN THE HIRE PRICE 2026
- 65** CONDITIONS OF HIRE
- 66** MAPS & GUIDES
- 67** BOOKING FORM



BOOKING COULD NOT BE EASIER

Our brochure and website will assist you in making your decision regarding which boat, route and base best suits you. The easiest way is to book online or by calling our friendly booking office team on 0330 333 0590. We also offer a booking form on page 67, simply complete this and return to us. Alternatively, if you would like further information outside our usual office hours, our website allows you to access a wealth of information 24 hours a day.

For availability, prices and bookings visit www.abcboathire.com. Simply enter details of your preferred start location and dates to peruse the available boats and prices. You can make your reservation using the online booking form and make payments via a secure screen.

**VISIT WWW.ABCBOATHIRE.COM
OR CALL OUR FRIENDLY TEAM ON 0330 333 0590**

EASY-PAY SCHEME SPREAD THE COST OF YOUR HOLIDAY WITH OUR EASY PAYMENT PLAN.



No upfront deposit is needed, you just divide the total cost of your holiday to be paid in equal monthly instalments. After making your reservation, a direct debit payment schedule will be issued to you. The earlier you book your trip, the less your monthly payments will be. In terms of payment, the monthly charge will be on the first day of every month. Just tick 'easy pay' when booking for this option.

GREEN HOLIDAYS A VOLUNTARY DONATION SCHEME (SUGGESTED £5.00 PER HOLIDAY) TO OFFSET THE ENVIRONMENTAL IMPACT OF YOUR HOLIDAY AND TRAVEL TO THE START BASE.

Your donation will go to the Canal & River Trust, who through their Green Plan promote and protect Britain's waterways.



PLANNING YOUR TRIP

The following pages give you a flavour of the most popular routes available. You'll be free to travel in whichever direction you please, and for however long you wish.

Guide book references for each route **P1 N2 L16** refer to the listing on page 66 of the brochure, which can be purchased to help with planning your holiday. As a rough calculation when planning a route, add the number of locks to the distance in miles and divide the total by 3 to give the cruising time in hours.

Ready to choose a boat? Our boat layouts on pages 44-56 ensure that you choose the boat that's right for you and your crew. Taking the holiday at your own pace, two active adults can easily handle a narrowboat. If you are considering a route with more locks, or are travelling with younger children, family or friends, consider taking a larger boat.

Not sure about how to steer a boat? It's pretty simple; as you cruise along, one person steers and the other members of the crew are free to take in the scenery or even walk the towpath alongside. At locks, (and when mooring) one person stays on the boat to steer whilst at least one person works the lock mechanism. When you are first taught to operate a lock it may appear bewildering, but by your second or third try, you'll begin to wonder what you were worried about!

SHORT BREAKS

For a few relaxing days, or to see what a holiday afloat is all about, a two or three night break on a narrowboat is perfect.

We have two night break boats available from all start bases, each with a number of splendid routes to choose from. Take a two or three night weekend break starting on Friday, or a four night midweek break starting on Monday for the same price. Remember that these boats are also available for weekly hire and, by adding a two night break to a week, you can also take a longer break of 10/11 nights. You can now start a short break on a Tuesday or Saturday on selected boats.



**"EFFICIENT BOOKING
PROCEDURE AND
EXCELLENT SERVICE
DURING HANDOVER AND
HANDBACK OF BOAT. VERY
ENJOYABLE SHORT BREAK."**

Book today

**TO CHECK AVAILABILITY, PRICING
AND TO MAKE YOUR BOOKING
WITH SECURE PAYMENT, PLEASE
VISIT WWW.ABCBOATHIRE.COM
OR CALL OUR FRIENDLY TEAM ON
0330 333 0590 (LOCAL RATE)
+44 1905 610660 (OVERSEAS)**

EASY AS...

A UNIQUE AND RELAXING WAY TO EXPLORE THE TRUE BEAUTY OF THE UK. SEEING THE COUNTRY ON ONE OF OUR CANALS IS AS EASY AS A, B, C...

A

Choose your base

From charming towns in the Midlands to Falkirk high up in Scotland, you can begin your boating holiday anywhere you like - just take your pick.

B

Choose your route

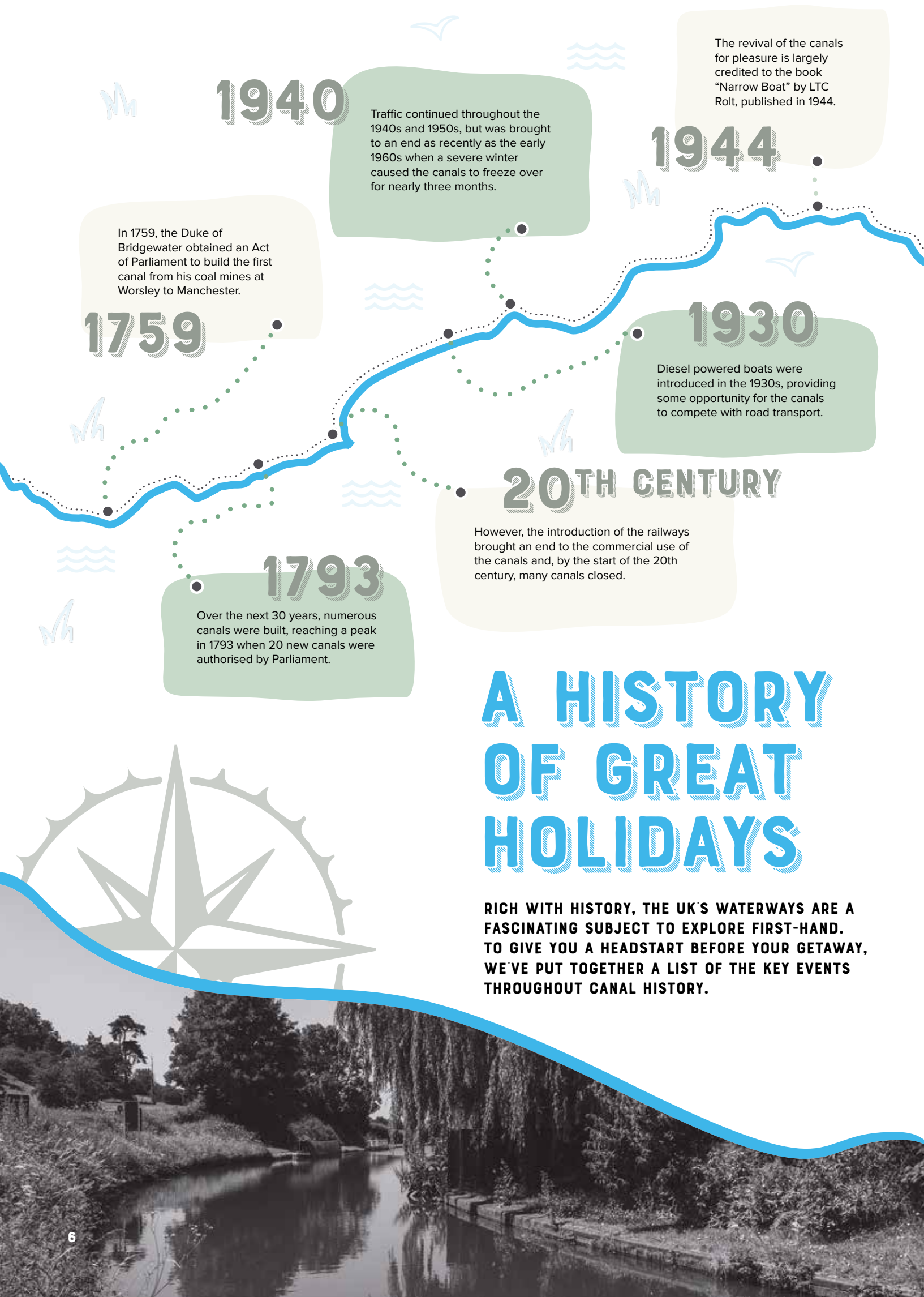
For each of our base destinations, we offer a variety of scenic routes that range from long weekends to two week breaks across the UK.

C

Choose your boat

With WiFi, plenty of sleeping space and modern amenities, our 29 classes of boats are perfect for relaxing breaks with loved ones.

BOOK YOUR CANAL BOATING BREAK TODAY
CALL US ON 0330 333 0590 OR EMAIL [INFO@ABCBOATHIRE.COM](mailto:info@abcboathire.com) OR VISIT [WWW.ABCBOATHIRE.COM](http://www.abcboathire.com)



1940

Traffic continued throughout the 1940s and 1950s, but was brought to an end as recently as the early 1960s when a severe winter caused the canals to freeze over for nearly three months.

1944

The revival of the canals for pleasure is largely credited to the book "Narrow Boat" by LTC Rolt, published in 1944.

1759

In 1759, the Duke of Bridgewater obtained an Act of Parliament to build the first canal from his coal mines at Worsley to Manchester.

1930

Diesel powered boats were introduced in the 1930s, providing some opportunity for the canals to compete with road transport.

20TH CENTURY

However, the introduction of the railways brought an end to the commercial use of the canals and, by the start of the 20th century, many canals closed.

1793

Over the next 30 years, numerous canals were built, reaching a peak in 1793 when 20 new canals were authorised by Parliament.

A HISTORY OF GREAT HOLIDAYS

RICH WITH HISTORY, THE UK'S WATERWAYS ARE A FASCINATING SUBJECT TO EXPLORE FIRST-HAND. TO GIVE YOU A HEADSTART BEFORE YOUR GETAWAY, WE'VE PUT TOGETHER A LIST OF THE KEY EVENTS THROUGHOUT CANAL HISTORY.

ALDERMASTON WHARF

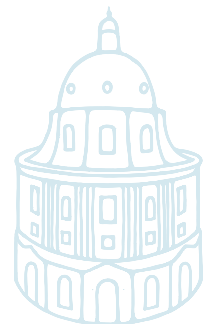
FROM ALDERMASTON YOU CAN CRUISE ALONG THE KENNET & AVON CANAL OR ACCESS THE RIVER THAMES (THAMES LICENCE INCLUDED FOR 2026). NEARBY TOWNS INCLUDE NEWBURY, HENLEY AND READING, WITH ALDERMASTON RAILWAY STATION ALSO CLOSE BY.

BERTHS AVAILABLE 2 - 12 (SEE BOAT LAYOUT PAGES)

BERKSHIRE, RG7 4JS

TEL: 0118 9714 123

WWW.ALDERMASTONWHARF.COM



PEWSEY & RETURN

7 NIGHTS • CRUISING TIME PER DAY 6½HRS • TOTAL LOCKS 90 • ROUTE TIME 43 HOURS

Begin your journey by cruising west to the picturesque market town of Newbury. You'll come across a number of nice pubs in the canal side village of Kintbury, before arriving in Hungerford. From there, you'll travel onto Great Bedwyn and Crofton Pump Station, which is home to the world's oldest working beam engine. Finally, as you travel onwards to the village of Pewsey, be sure to stop by Wootton Rivers to explore the history and traditions.

P8 N7 L20 H1

WINDSOR & RETURN

7 NIGHTS • CRUISING TIME PER DAY 5½HRS • TOTAL LOCKS 42 • ROUTE TIME 36 HOURS

Enjoy a short cruise to Reading, where you join the Thames and travel downstream through the rowing town of Henley and the charming town of Marlow, where Mary Shelley and T.S. Eliot once lived. Moor up at Taplow for a visit to Cliveden House and spoil yourself to some fine dining at either Heston Blumenthal's Fat Duck or the Roux brothers' Waterside Inn. If you continue on from here, you'll arrive in Windsor, where children will be treated with Legoland and Windsor Castle.

P8 N7 L20 L23

OXFORD & RETURN

7 NIGHTS • CRUISING TIME PER DAY 7HRS • TOTAL LOCKS 48 • ROUTE TIME 43 HOURS

Join the River Thames at Reading and cruise to Oxford, the city of dreaming spires. With its mix of ancient and modern sights, there is always plenty to do and see in Oxford.

P8 N7 L20

LIMEHOUSE & RETURN

10 NIGHTS • CRUISING TIME PER DAY 8HRS • TOTAL LOCKS 114 • ROUTE TIME 87 HOURS

You must inform us at the time of booking that you intend to take this route and evidence of suitable canal boat experience must be provided. Limehouse & return is only available via the Regents Canal from Brentford.

If you have more time to explore into London, then this route will take you down onto the River Thames, past Henley, Marlow, Hampton Court Bridge, Teddington, then onto the Grand Union Canal up to Little Venice, London Zoo and Camden market. At Henley you could visit The River and Rowing Museum (www.rrm.co.uk). From there, you will pass Runnymede near Egham, which is notable for its association with the Magna Carta and current collection of memorials. At Staines there is Thorpe Park (www.thorpepark.com), a theme park full of exciting rides and games for kids.

N7 L22 L23 G29

THE GRAND RING

14-21 NIGHTS • CRUISING TIME PER DAY 6-9HRS • TOTAL LOCKS 175 • ROUTE TIME 126 HOURS

You must inform us at the time of booking that you intend to take this route and evidence of suitable canal boat experience must be provided. The Thames River Licence price is included in your hire charge from Aldermaston but will need to be paid if starting from Gayton Marina (please contact the marina directly).

To fully enjoy this route, we recommend ensuring you have at least 2 weeks booked. During your trip, some highlights you can look forward to enjoying are charming towns and cities such as Oxford, Banbury and Leighton Buzzard.

N1 N7 G29

BATH & RETURN

14 NIGHTS • CRUISING TIME PER DAY 6½HRS • TOTAL LOCKS 176 • ROUTE TIME 82 HOURS

This route will take you along the Kennet & Avon past two surviving turf-sided locks. You'll follow through to Pewsey, along Devizes and then down to the Caen Hill flight of locks. From our Hilperton Marina, you can pick up the Bath and return route.

P8 N7 L20 H1

SHORT BREAKS

WEEKENDS: FRIDAY-SUNDAY (2 NIGHTS)

WEEKENDS: FRIDAY-MONDAY (3 NIGHTS)

MIDWEEK: MONDAY-FRIDAY (4 NIGHTS)

NEWBURY & RETURN

3 NIGHTS • CRUISING TIME PER DAY 5HRS • TOTAL LOCKS 22 • ROUTE TIME 12 HOURS

Cruise to the picturesque market town of Newbury, which boasts some lovely 17th century buildings or spend a day at the races.

P8 N7 L20 H1

HUNGERFORD & RETURN

4 NIGHTS • CRUISING TIME PER DAY 7½HRS • TOTAL LOCKS 42 • ROUTE TIME 23 HOURS

Take a cruise to Hungerford and visit the famous antique shops and beautiful waterfront.

P8 N7 L20 H1

HENLEY & RETURN

3-4 NIGHTS • CRUISING TIME PER DAY 6-7HRS • TOTAL LOCKS 30 • ROUTE TIME 20 HOURS

Go up onto the River Thames and travel to the 12th century market town of Henley.

N7 L23 G29

BOOK YOUR CANAL BOATING BREAK TODAY

CALL US ON 0330 333 0590 OR EMAIL INFO@ABCBOATHIRE.COM OR VISIT WWW.ABCBOATHIRE.COM

ALVECHURCH

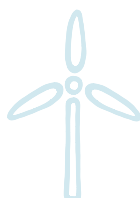
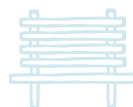
ALVECHURCH MARINA IS AT THE HEART OF AN EXTREMELY VARIED CANAL NETWORK WITH A SELECTION OF ROUTES AROUND THE MIDLANDS. LOCAL TO THE MARINA IS THE IMPRESSIVE 30 LOCK TARDEBIGGE FLIGHT AND ON-SITE IS THE AWARD-WINNING WEIGHBRIDGE PUB (WWW.THE-WEIGHBRIDGE.CO.UK).

BERTHS AVAILABLE 2 - 12
(SEE BOAT LAYOUT PAGES)

WORCESTERSHIRE, B48 7SQ

TEL: 0121 445 1133

WWW.ALVECHURCHMARINA.COM



STOURPORT RING

**7 NIGHTS • CRUISING TIME PER DAY 7½HRS •
TOTAL LOCKS 116 • ROUTE TIME 52 HOURS**

A route of contrasts, this journey takes you into the centre of Birmingham, where you'll experience both the 21st and 19th century sides of the city. Enjoy trips to The Symphony Hall, National Indoor Arena and Sea Life Centre (with the kids), or stop by the Bull Ring for an afternoon of shopping delight. This route can also be travelled from our Gailey and Worcester Marinas.

P1 N2 L16

STRATFORD-UPON-AVON & RETURN

**7 NIGHTS • CRUISING TIME PER DAY 7HRS •
TOTAL LOCKS 110 • ROUTE TIME 43 HOURS**

From Alvechurch, you will travel up to Kings Norton Junction and then down the Stratford-upon-Avon Canal. For more details on Stratford, go to www.stratford-upon-avon.co.uk.

P2 N2 L15

THE BLACK COUNTRY RING

**7 NIGHTS • CRUISING TIME PER DAY 8HRS •
TOTAL LOCKS 80 • ROUTE TIME 52 HOURS**

This route has lots of family activities and a rich mixture of canal scenery. The ring can also be started at our Gailey Marina.

P2 N2 N3 L12

AVON RING

**10-14 NIGHTS • CRUISING TIME PER DAY 6HRS •
TOTAL LOCKS 139 • ROUTE TIME 59 HOURS**
(Additional licence required for River Avon)

This route will take you on both the River Severn and Avon, and to fully enjoy it you will need at least 10 or 11 nights. You will need a licence for the River Avon (go to www.avonnavigationtrust.org for more details). This is an energetic route that takes in Worcester, Tewkesbury, Evesham and Stratford-upon-Avon and it is a great route to explore the history of the Heart of England. If you travel for 2 weeks, you can also detour down to Gloucester with its docks, warehouses and museums (www.thecityofgloucester.co.uk).

P2 N2 L15

WARWICKSHIRE RING

**10-14 NIGHTS • CRUISING TIME PER DAY 5-7HRS •
TOTAL LOCKS 128 • ROUTE TIME 65 HOURS**

This route can be completed from Alvechurch Marina in 10 nights by more experienced boaters, but to enjoy this trip at a more relaxed pace, we advise that you take 14 nights to complete it. The route can also be completed from Gayton and Rugby.

P6 N3 L13

DROITWICH CANAL

**7 NIGHTS • CRUISING TIME PER DAY 5HRS •
TOTAL LOCKS 76-92 • ROUTE TIME 30 HOURS**

This canal can be cruised as part of the Stourport Ring or as a leisurely return route.

P1 N2 D1

SHORT BREAKS

**WEEKENDS: FRIDAY-SUNDAY (2 NIGHTS)
WEEKENDS: FRIDAY-MONDAY (3 NIGHTS)
MIDWEEK: MONDAY-FRIDAY (4 NIGHTS)**

LAPWORTH & RETURN

**3/4 NIGHTS • CRUISING TIME PER DAY
4½-6½HRS • TOTAL LOCKS 0-36
• ROUTE TIME 14-23 HOURS**

Head north towards Birmingham, but then turn onto the Stratford Canal towards the Lapworth Flight of locks. Stop at the top of Lapworth Flight for a relaxing route with no locks - a good first time route - or for those that want to just enjoy the canal and countryside without the locks. Take a 4 night break and travel down the locks to Kingswood Junction or travel a few more hours to take in Knowle, Hatton Flight or Wootton Wawen.

P2 N2 L15

BIRMINGHAM & RETURN

**3 NIGHTS • CRUISING TIME PER DAY 5HRS •
TOTAL LOCKS 0 • ROUTE TIME 10 HOURS**

A relaxing route that will take you through countryside and then into the hustle and bustle of Birmingham city centre (www.visitbirmingham.com).

P1 N2 L16

BOOK YOUR CANAL BOATING BREAK TODAY

CALL US ON 0330 333 0590 OR EMAIL INFO@ABCBOATHIRE.COM OR VISIT WWW.ABCBOATHIRE.COM

ANDERTON

ANDERTON MARINA IS LOCATED IN THE NORTH WEST OF ENGLAND AND IT IS IDEAL FOR CRUISING THE TRENT AND MERSEY AND THE CHESHIRE RING. LOCATED CLOSE TO THE MARINA IS THE HISTORIC ANDERTON BOAT LIFT, ONE OF THE SEVEN WONDERS OF THE WATERWAYS.

BERTHS AVAILABLE 2 - 12 (SEE BOAT LAYOUT PAGES)

CHESHIRE, CW9 6AJ

TEL: 01606 79642

WWW.ANDERTONMARINA.COM



THE CHESHIRE RING

DUE TO MAINTENANCE ON THIS ROUTE COMPLETING THE CHESHIRE RING IN 2026 WILL NOT BE POSSIBLE.

7-14 NIGHTS • CRUISING TIME PER DAY 4-8 HRS • TOTAL LOCKS 92 • ROUTE TIME 53 HOURS

We recommend travelling this ring clockwise, heading up to Manchester. The ring takes in the whole of the Macclesfield Canal, parts of the Trent & Mersey, Bridgewater, Rochdale, Ashton and Peak Forest Canals, providing a range of scenery. Enjoy glorious scenery as the Macclesfield Canal skirts the edge of the Pennines. If time allows, why not take a detour from Marple along the Peak Forest Canal and enjoy stunning views. You will cruise through the heart of Manchester and moor at Castlefield to explore the city and places.

P5 N5 L5

FOUR COUNTIES RING

10-14 NIGHTS • CRUISING TIME PER DAY 6½HRS • TOTAL LOCKS 102 • ROUTE TIME 70 HOURS

From Anderton, you will travel down to Middlewich to join the ring. This is one of the more rural cruising rings taking you through the counties of Cheshire, Staffordshire, Shropshire and the West Midlands. This route can also be taken from our Gailey, Wrenbury and Blackwater Meadow Marinas.

P5 N4 L10

CHESTER OR ELLESMERE PORT & RETURN

**7-10 NIGHTS • CRUISING TIME PER DAY 5½-7HRS
TOTAL LOCKS 44 • ROUTE TIME CHESTER 34 HOURS
ELLESMERE PORT 41 HOURS**

On this popular countryside route the locks are well spaced for easy cruising. Travel to Chester and then retrace your steps back to the marina, which is a popular week for first time boaters. You can also continue past Chester along the Shropshire Union main line to its historic terminal on the River Mersey at Ellesmere Port. Mooring in Chester is within easy reach of the walled city centre with its medieval 'rows' where there are a variety of shops, galleries and the majestic cathedral.

P3 N4 L8

THE PENNINE RING

21 NIGHTS • CRUISING TIME PER DAY 6½HRS • TOTAL LOCKS 227 • ROUTE TIME 128 HOURS

The restored Huddersfield Narrow Canal crosses the Pennines to complete the fantastic Pennine Ring. At 5,698 yards, the Standedge Tunnel is the longest and highest in Britain. Please note, the passage requires pre-booking with the Standedge Visitor Centre (call: 0303 040 4048). East of Huddersfield, the canal is wider and the locks are shorter, so the maximum length of a boat able to complete the circuit is 58ft.

P5 P9 N5

SHORT BREAKS

**WEEKENDS: FRIDAY-SUNDAY (2 NIGHTS)
WEEKENDS: FRIDAY-MONDAY (3 NIGHTS)
MIDWEEK: MONDAY-FRIDAY (4 NIGHTS)**

LYMM & RETURN

3 NIGHTS • CRUISING TIME PER DAY 9HRS • TOTAL LOCKS 2 • ROUTE TIME 14 HOURS

Cruise above the River Weaver and its valley where the only lock has a drop of just six inches! Preston Brook has a tunnel of nearly a mile, and there are also two shorter ones on this route.

P5 N5 L5

RIVER WEAVER VIA ANDERTON BOAT LIFT & RETURN

**4 NIGHTS • CRUISING TIME PER DAY 5HRS • TOTAL LOCKS 10 • ROUTE TIME 15 HOURS
(SOME EXPERIENCE REQUIRED)
(PRE-BOOKING FOR THE BOAT LIFT REQUIRED)**

A stunning feat of 19th Century engineering, the Anderton boat lift carries two boats at a time hydraulically, one up and one down.

At the centre of the Cheshire salt-making region, the River Weaver is steeped in industrial history, yet bristling with wildlife and beautiful scenery.

P5 N4 L5

BEESTON & RETURN

4 NIGHTS • CRUISING TIME PER DAY 8HRS • TOTAL LOCKS 26 • ROUTE TIME 27 HOURS

Cruise past Nantwich to the village of Beeston and visit the Castle. With spectacular views, Beeston is one of the most dramatically sited medieval castles in England.

P3 N4 L8

NANTWICH & RETURN

**3 NIGHTS • CRUISING TIME PER DAY 8½-10HRS
• TOTAL LOCKS 16 • ROUTE TIME 22 HOURS**

Easy cruising south from Anderton with splendid scenery and good pubs. The lovely medieval town of Nantwich, with its distinctive black and white architecture, is a brisk ¼ hour walk from the canal.

P3 N4 L8

BOOK YOUR CANAL BOATING BREAK TODAY

CALL US ON 0330 333 0590 OR EMAIL INFO@ABCBOATHIRE.COM OR VISIT WWW.ABCBOATHIRE.COM

BLACKWATER MEADOW

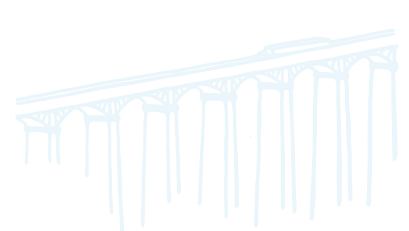
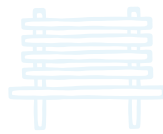
SITUATED CLOSE TO THE ELLESMERE ARM ON THE LLANGOLLEN CANAL, THIS ROUTE OFFERS SCENIC BEAUTY AND BREATHTAKING ENGINEERING. IT'S OUR CLOSEST BASE TO LLANGOLLEN IF YOU WANT TO VISIT ON A SHORT BREAK.

BERTHS AVAILABLE 2 - 10 (SEE BOAT LAYOUT PAGES)

SHROPSHIRE, SY12 9DD

TEL: 01691 624391

WWW.BLACKWATERMEADOW.COM



LLANGOLLEN CANAL

7 NIGHTS • CRUISING TIME PER DAY 4HRS • TOTAL LOCKS 4 • ROUTE TIME 24 HOURS

The Llangollen Canal has some beautiful scenery and breathtaking engineering, and it is one of the most popular canals in Britain. It combines the gentle countryside of Shropshire with magnificent Wales. It boasts one of the most striking features on the UK canal network - the Pontcysyllte Aqueduct, which you will have to travel across before you get to Llangollen. So how do you pronounce Pontcysyllte? Aim at something like "Pont-kersulty". Unusually, this canal has a flow of 2mph as it feeds other canals, so the outbound journey will always be slower than on the way back. In a week from Blackwater you will be able to take a leisurely cruise and spend more time enjoying the activities around Llangollen (www.llangollen.org.uk) or you could decide to return and either go down the Montgomery Canal or up to Whitchurch where we have another marina. (You must pre-book your passage if you plan to travel down the Montgomery Canal).

P3 N4 L8 H2

CHESTER OR ELLESMERE PORT & RETURN

7-10 NIGHTS CRUISING TIME PER DAY 6-7½HRS • TOTAL LOCKS 66/74 • ROUTE TIME CHESTER 46 HOURS ELLESMERE PORT 55 HOURS

From Blackwater you will travel up the Llangollen Canal, past our Whitchurch and Wrenbury Marinas to join the Shropshire Union Canal. Travelling to Chester can be completed in a week - visit www.abcboathire.com for more detailed information. If you want to take more time out in Chester and travel on to Ellesmere Port, then take a longer break from Blackwater. Chester has plenty to do such as walking the City Walls, visiting the cathedral, shopping or dining out (be inspired and find more details at www.visitchester.com).

P3 N4 L8

HOLIDAY PROPERTY ALSO AVAILABLE AT THIS LOCATION, PLEASE SEE: WWW.ABCHOLIDAYCOTTAGES.COM

THE CHESHIRE RING

14 NIGHTS • CRUISING TIME PER DAY 7HRS • TOTAL LOCKS 137 • ROUTE TIME 93 HOURS

This is a longer ring from Blackwater where you will again travel up the Llangollen Canal to join the Shropshire Union. Visit www.abcboathire.com for more detailed information.

P3 P5 N4 N5 L5 L8

FOUR COUNTIES RING

10-14 NIGHTS • CRUISING TIME PER DAY 7HRS • TOTAL LOCKS 132 • ROUTE TIME 90 HOURS

Travel up the canal to the Shropshire Union to begin the ring. Visit www.abcboathire.com for more detailed information.

P3 P5 N4 L8 L10

SHORT BREAKS

**WEEKENDS: FRIDAY-SUNDAY (2 NIGHTS)
WEEKENDS: FRIDAY-MONDAY (3 NIGHTS)
MIDWEEK: MONDAY-FRIDAY (4 NIGHTS)**

CHIRK & RETURN

3-4 NIGHTS • CRUISING TIME PER DAY 5HRS • TOTAL LOCKS 4 • ROUTE TIME 10 HOURS

Towards the Welsh border at Chirk, the country's fine hills come into view and the scenery becomes altogether more dramatic.

P3 N4 L8 H2

LLANGOLLEN & RETURN

3 NIGHTS • CRUISING TIME PER DAY 8HRS • TOTAL LOCKS 4 • ROUTE TIME 17 HOURS

**4 NIGHTS • CRUISING TIME PER DAY 7HRS • TOTAL LOCKS 4
ROUTE TIME 17 HOURS •**

The canal hugs the side of the River Dee valley on its approach to the town of Llangollen. This is a 3 or 4 night break - during the summer period you may need to allow more time to complete. You must pre-book your passage if you plan to travel the Montgomery Canal.

P3 N4 L8 H2



BOOK YOUR CANAL BOATING BREAK TODAY

CALL US ON 0330 333 0590 OR EMAIL INFO@ABCBOATHIRE.COM OR VISIT WWW.ABCBOATHIRE.COM

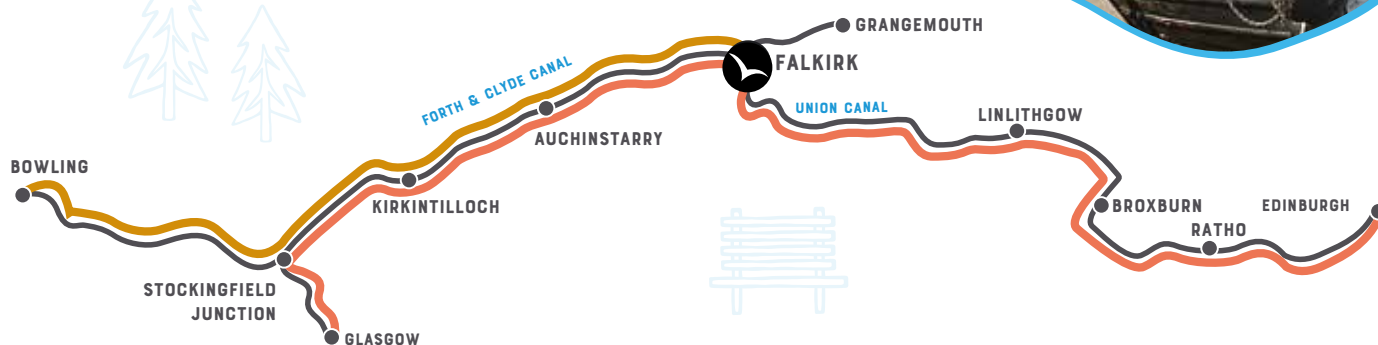
FALKIRK

EXPLORE THE LOWLANDS OF SCOTLAND WITH EASY CRUISING AND EXPERIENCE THE INCREDIBLE FALKIRK WHEEL LINKING THE UNION CANAL AND THE FORTH & CLYDE CANAL.

**BERTHS AVAILABLE 2 - 8
(SEE BOAT LAYOUT PAGES)**

SCOTLAND, FK1 4RS
TEL: 01324 627212
WWW.FALKIRKWHARF.COM

WIDE BEAM BOAT AVAILABLE



The Scottish Lowland Canals are quite different from the canals typical of England and Wales. The Forth & Clyde is much wider than the average English canal. The Union Canal is a contour canal and has no locks at all or bridges that have to be opened. Scottish Canals staff currently operate all of the locks and bridges and boaters are not allowed to operate the locks themselves, although help is happily accepted. Between Falkirk and Glasgow there are four locks and three road bridges with a further 18 locks and a number of pedestrian bridges between Glasgow and the Clyde at Bowling. Both the Forth & Clyde and Union Canals were closed in the early 1960s and it was not until lottery funding was obtained in 1999 that

restoration works rejoined the cities of Glasgow and Edinburgh by canal. At a quarter of the cost of the overall £84.5 million project, the Falkirk Wheel is the most significant structure by far, but only one link in the scheme involving rebuilding bridges, clearing blockages and cutting new stretches of canal. For more facts and figures visit their website: www.thefalkirkwheel.co.uk (or ring 01324 619888) but in summary, the 25m level difference between the canals is traversed via a pair of gondolas, which together carry 600 tonnes of water to the 100m aqueduct at the top of the 35m diameter wheel.



EDINBURGH & GLASGOW

**7 NIGHTS • CRUISING TIME PER DAY VARIES
DEPENDING ON WHEEL/LOCK/BRIDGE BOOKINGS
4-8HRS PER DAY • ROUTE TIME 44 HOURS**

Complete the width of Scotland, and back, visiting both cities in a one week holiday. You will cruise the Union Canal to Edinburgh Quay, over aqueducts, through tunnels and past tranquil scenery as well as the Forth and Clyde canal to Glasgow.

Please note, if you're choosing to do this route you will probably need to contribute more for fuel than the deposit amount.

Please note that if you wish to cruise West towards Glasgow along the Forth & Clyde Canal you will have to book a time for Bonnybridge Lift Bridge to be opened for you.

Also, if you wish to travel the Kelpies, you need to book your passage. You should call the Scottish Canals Boat Movement Team on 07810 794 467 at least a week before your holiday.

BOWLING & RETURN

**7 NIGHTS • CRUISING TIME PER DAY 6HRS •
TOTAL LOCKS 44 • ROUTE TIME 33 HOURS**

The Forth & Clyde Canal follows the Clyde Estuary all the way down to the old ship building village of Bowling - a pleasant boating haven. The route has a rich mix of industry old and new, stunning views of the Clyde and relics of the ship building era.

VISIT THE HELIX PROJECT AND THE KELPIES AT GRANGEMOUTH. IF YOU WOULD LIKE TO EXTEND YOUR HOLIDAY TO INCLUDE THIS TRIP, PLEASE ALLOW FOR AN EXTRA 3 NIGHTS.

The new Forth & Clyde Canal extension and towpath will provide a 1 km link from the existing Forth & Clyde Canal down to a new sea lock on the River Carron and out to the Firth of Forth. The Kelpies form the centrepiece to this new piece of canal, surrounded by the Kelpies Canal Hub. For more information, visit www.thehelix.co.uk

SHORT BREAKS

**WEEKENDS: FRIDAY-SUNDAY (2 NIGHTS)
WEEKENDS: FRIDAY-MONDAY (3 NIGHTS)
MIDWEEK: MONDAY-FRIDAY (4 NIGHTS)**

GLASGOW & RETURN

**3 NIGHTS • CRUISING TIME PER DAY 6½-10HRS •
TOTAL LOCKS 8 • ROUTE TIME 18 HOURS**

Four evenly spaced locks after Bonnybridge take the canal up to the broad, straight section before Auchinstarry. The majestic Campsie Fells rise from the valley that the canal shares with the River Kelvin, and the scenery is superb as the canal then follows contours for the rest of its journey to Glasgow. The canal arm south towards Applecross Street Basin in Glasgow, looks down to where the River Kelvin winds from the university past the museums and botanical gardens. A major port, with a shipping history back to the 18th century, Glasgow has a wealth of museums and collections. The art galleries and museums of Glasgow are never without examples by Charles Rennie Mackintosh — there is even a church designed by him in the city. Discover more at www.glasgowguide.co.uk

EDINBURGH & RETURN

**4 NIGHTS • CRUISING TIME PER DAY 6-10HRS •
TOTAL LOCKS 6 • ROUTE TIME 22 HOURS**

This cruise starts via the Falkirk Wheel and the new Rough Castle Tunnel. Two new locks and a mile of new canal join the original canal at the site of the summit of the flight of 11 locks that used to join the two canals. The stalactites and rock-hewn sections of the Falkirk tunnel are a treat for the budding geologist. Amongst the numerous minor aqueducts en route, three to note are the 12 arch, 85ft Avon Aqueduct and the Almond and Slateford Aqueducts, both at 75ft high. Beecraigs Country Park (01506 844516 / www.beecraigs.com) and the beautifully preserved remains of Linlithgow Palace on the shore of Linlithgow Loch (0131 668 8600 / www.historic-scotland.gov.uk) are within easy reach of the canal. (TIC 01506 844600). Discover more at: www.edinburgh.org.uk.

ROVER TICKET

If travelling from Falkirk, a rover ticket will be charged by Scottish Canals for use of the canals. This will be a flat charge of £25 for any holiday over three nights. If your trip is three days or less, you will be charged £15. This ticket will be administered by Scottish Canals and payable on the first day of your holiday via the Falkirk Office.



BOOK YOUR CANAL BOATING BREAK TODAY

CALL US ON 0330 333 0590 OR EMAIL info@abcboathire.com OR VISIT www.abcboathire.com

GAILEY

DISCOVER THE PEACEFUL STAFFORDSHIRE, SHROPSHIRE AND CHESHIRE COUNTRYSIDE, OR THE VIBRANT AND CONTRASTING GAS STREET BASIN IN BIRMINGHAM - HOME OF THE CANALS! HEAD NORTH TO THE HISTORIC POTTERIES AND THE CALDON CANAL, OR GO FURTHER AFIELD INTO WORCESTERSHIRE & BEYOND. FOR A LONGER TRIP, TRAVEL THROUGH SHROPSHIRE AND VENTURE ON TO THE BEAUTIFUL LLANGOLLEN CANAL.

BERTHS AVAILABLE 2 - 8 (SEE BOAT LAYOUT PAGES)

STAFFORDSHIRE, ST19 5PR

TEL: 01902 790612

WWW.GAILEYWHARF.COM



THE BLACK COUNTRY RING

7 NIGHTS • CRUISING TIME PER DAY 7½HRS • TOTAL LOCKS 78 • ROUTE TIME 47 HOURS

Gailey is ideally placed for this ring, and takes you on the Staffordshire & Worcestershire Canal, through the water fronts of Birmingham via the new Main Line, onto the Birmingham & Fazeley and the Trent & Mersey. The route is a varied mix of urban and countryside and offers family activities along the way. Birmingham has its shopping, restaurants and art galleries, plus the Sea Life Centre and museums for the children. Visit the Black Country Museum and live the story of the Black Country (www.bclm.co.uk). There is also Dudley Zoo and Castle (www.dudleyzoo.org.uk), Drayton Manor Park (www.draytonmanor.co.uk) and Shugborough Hall (www.shugborough.org.uk), which are perfect for a family day out.

P1 N3 L12

NANTWICH & RETURN

7 NIGHTS • CRUISING TIME PER DAY 6½HRS • LOCKS 58 • ROUTE TIME 41 HOURS

Ideal for first timers or those looking for a relaxing break. Leaving Gailey, you'll head south down the Staffordshire & Worcestershire Canal to Autherley Junction then cruise the Shropshire Union with Market Drayton, Audlem and Nantwich along the way. Retrace your steps back to Gailey and enjoy the new perspective that this will give.

P5 N4 L10

STOURPORT & RETURN

7 NIGHTS • CRUISING TIME PER DAY 6HRS • TOTAL LOCKS 58 • ROUTE TIME 38 HOURS

A comfortable cruise along the pretty Staffs & Worcs Canal. If you wanted to go past Stourport you could continue to Worcester, which is a total of 72 locks and needs 8 hours cruising per day. Kinver Village is also worth a stop for shopping and excellent pubs. If you're an energetic boater, you'll be rewarded with extensive views after a climb up Kinver Edge.

P1 N2 L16

STOURPORT RING

7 NIGHTS • CRUISING TIME PER DAY 9½HRS • TOTAL LOCKS 118 • ROUTE TIME 59 HOURS

Visit www.abcboathire.com for more detailed information.

P1 N2 L16

CALDON CANAL & RETURN

7 NIGHTS • CRUISING TIME PER DAY 7½HRS • TOTAL LOCKS 94 • ROUTE TIME 47 HOURS

An alternative to the four counties ring but equally energetic. You will head up towards the Peak District and enter the Churnet Valley with its stunning countryside. The canal terminates at Froghall where you turn and retrace your steps.

P5 N4 L10

FOUR COUNTIES RING

10-14 NIGHTS • CRUISING TIME PER DAY 4.5 - 9HRS • TOTAL LOCKS 94 • ROUTE TIME 61 HOURS

This route takes you along the wonderfully rural Staffordshire & Worcestershire Canal to Great Haywood Junction. Passing under a distinctive roving bridge, you join the Trent & Mersey Canal heading north towards the Potteries and Peak District. Rolling Staffordshire countryside leads you to Stoke-on-Trent, the Wedgwood Visitor Centre and the impressive 2926-yard long Harecastle Tunnel. The scenery on the climb up 'Heartbreak Hill' to the summit at Kidsgrove is fantastic. Beyond Harecastle, the 13 miles to the salt town of Middlewich sees the canal descend 31 locks to the Cheshire Plains. The short Middlewich arm links the Trent and Mersey Canal to the Shropshire Union Canal, again through more glorious countryside. Be sure not to miss the Bottle Kilns at Etruria.

P5 N4 L10

LLANGOLLEN & RETURN

14 NIGHTS • CRUISING TIME PER DAY 7HRS • TOTAL LOCKS 100 • ROUTE TIME 94 HOURS

Enjoy a two-week cruise heading to beautiful Llangollen renowned for spectacular scenery.

P3 P5 N4 L8 H2

SHORT BREAKS

**WEEKENDS: FRIDAY-SUNDAY (2 NIGHTS)
WEEKENDS: FRIDAY-MONDAY (3 NIGHTS)
MIDWEEK: MONDAY-FRIDAY (4 NIGHTS)**

NORBURY & RETURN

3 NIGHTS • CRUISING TIME PER DAY 6½HRS • TOTAL LOCKS 4 • ROUTE TIME 15 HOURS

A leisurely route where you get to relax and unwind.

P5 N4 L10

MARKET DRAYTON & RETURN

4 NIGHTS • CRUISING TIME PER DAY 7½HRS • TOTAL LOCKS 14 • ROUTE TIME 24 HOURS

Extend your Norbury and return trip to Market Drayton.

P5 N4 L10

STONE & RETURN

4 NIGHTS • CRUISING TIME PER DAY 7½HRS • TOTAL LOCKS 30 • ROUTE TIME 24 HOURS

Travel up the Trent & Mersey to the market town of Stone.

P5 N4 L10

GREAT HAYWOOD & RETURN

3 NIGHTS • CRUISING TIME PER DAY 6HRS • TOTAL LOCKS 22 • ROUTE TIME 14 HOURS

Go up to the Great Haywood Junction and you might want to visit Shugborough Hall.

P5 N4 L10

BOOK YOUR CANAL BOATING BREAK TODAY

CALL US ON 0330 333 0590 OR EMAIL INFO@ABCBOATHIRE.COM OR VISIT WWW.ABCBOATHIRE.COM

GAYTON

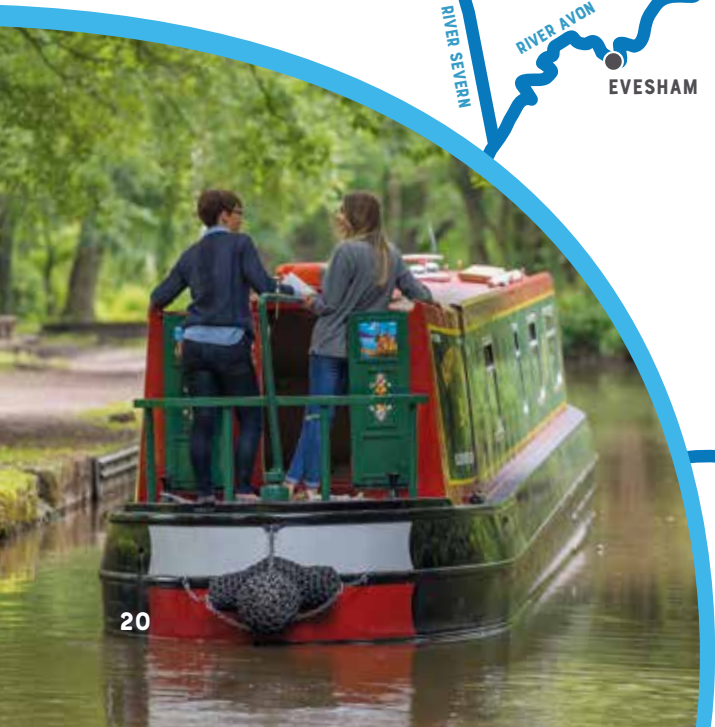
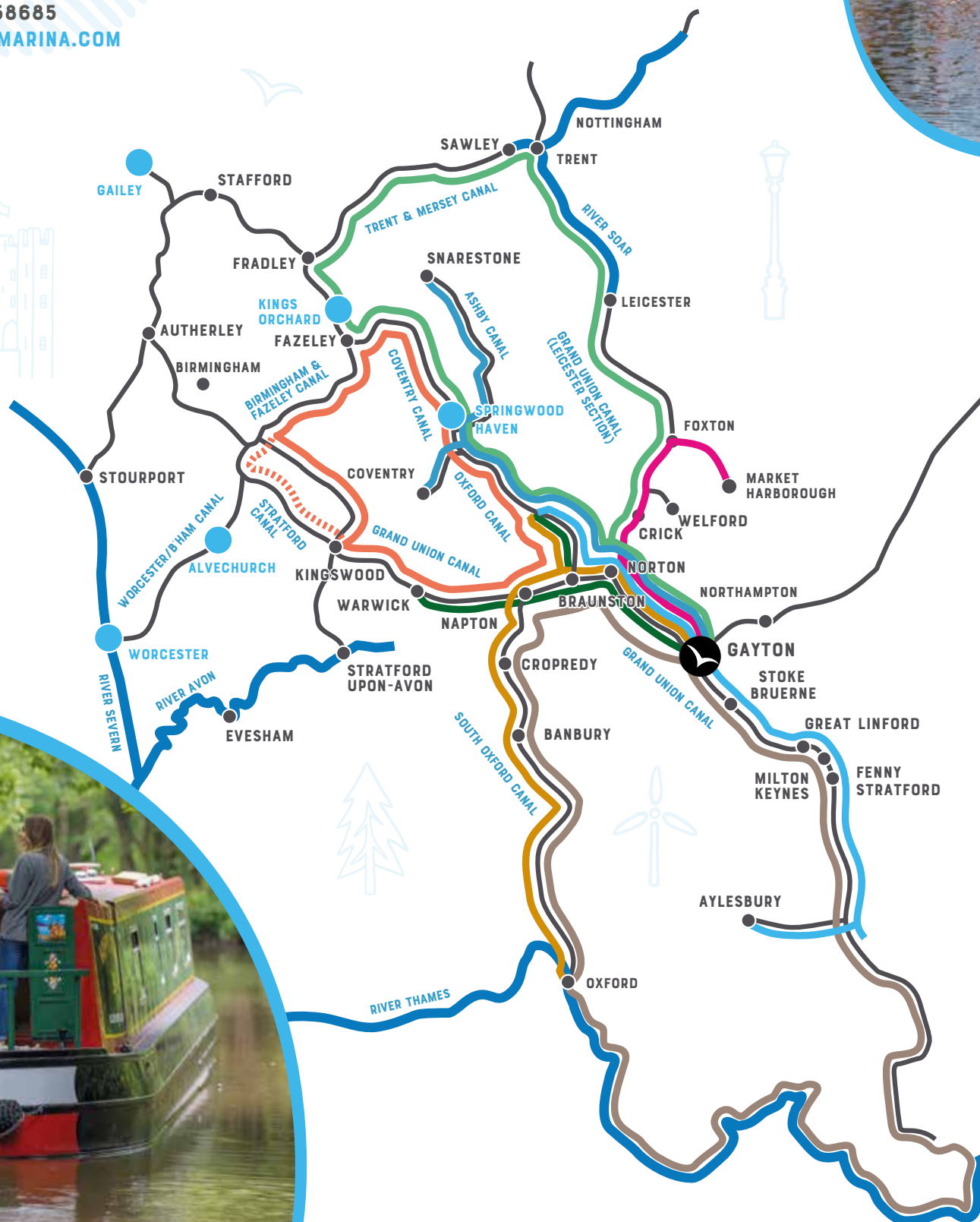
ROUTES ARE TYPIFIED BY ROLLING NORTHAMPTONSHIRE ARABLE LANDSCAPES, RURAL COUNTRYSIDE PASSING THROUGH HILLS, WOODED COUNTRY, TOWNS AND VILLAGES.

BERTHS AVAILABLE 2 - 12 (SEE BOAT LAYOUT PAGES)

NORTHANTS, NN7 3ER

TEL: 01604 858685

WWW.GAYTONMARINA.COM



MARKET HARBOUROUGH & RETURN

7 NIGHTS • CRUISING TIME PER DAY 6HRS • TOTAL LOCKS 48 • ROUTE TIME 40 HOURS

This experienced route is popular with those seeking something different - if you don't mind a bit of exercise. Cruise up the Grand Union Canal to Norton, then up the Leicester section for a short while towards Leicester. On the way to Market Harborough you will encounter two tunnels, two sets of staircase locks and mile after mile of open countryside.

P7 N1 N3 L14 L18

AYLESBURY & RETURN

7-10 NIGHTS • CRUISING TIME PER DAY 6HRS • TOTAL LOCKS 84 • ROUTE TIME 46 HOURS

You'll journey through delightful countryside, taking in the Great Ouse Aqueduct at Cosgrove, Milton Keynes. You'll then arrive in Aylesbury, with the attractive old town centre just a short walk from the canal basin.

P7 N1 L18

WARWICKSHIRE RING

10-11 NIGHTS • CRUISING TIME PER DAY 7HRS • TOTAL LOCKS 120 • ROUTE TIME 76 HOURS

Visit www.abcboathire.com for more detailed information.

P6 N3 L13

LEICESTER / EAST MIDLANDS RING

14 NIGHTS • CRUISING TIME PER DAY 6½HRS • TOTAL LOCKS 115 • ROUTE TIME 88 HOURS

A pleasant two week cruise through parts of Staffordshire, Warwickshire, Leicestershire and Derbyshire. This route can also be completed from Rugby and Union Wharf. Visit www.abcboathire.com for more detailed information.

P7 N1 N3

COVENTRY OR SNARESTONE & RETURN

7 NIGHTS • CRUISING TIME PER DAY 6-8HRS • TOTAL LOCKS 34 • ROUTE TIME COVENTRY 40 HOURS SNARESTONE 54 HOURS

With only 17 locks each way between Gayton and Coventry, this is one of the easiest one-week routes. The remote and rural Ashby Canal for Snarestone offers 23 miles of lock free cruising after Marston. You can moor at Shenton for Bosworth Battlefield Visitor Centre (www.bosworthbattlefield.com).

P6 P7 N1 N3 L14 L18

BANBURY & RETURN

7 NIGHTS • CRUISING TIME PER DAY 7HRS • TOTAL LOCKS 70 • ROUTE TIME 43 HOURS

This is a popular cruise through pretty Cotswold countryside. Visit www.abcboathire.com for more detailed information.

P7 N1 L17 L18

OXFORD & RETURN

10-11 NIGHTS • CRUISING TIME PER DAY 6½HRS • TOTAL LOCKS 104 • ROUTE TIME 74 HOURS

Continue on past Banbury to Oxford, the 'City of Dreaming Spires'. Oxford has lots to offer including historical places such as Blenheim Palace & Christ Church College. You could also go shopping or dine out at any one of the lovely shops, cafes and restaurants. It's definitely a popular choice for those who want to stretch their holiday for more than a week. (See more at www.experienceoxford.org).

P7 N1 L18

THE GRAND RING

14-21 NIGHTS • CRUISING TIME PER DAY 6-9HRS • TOTAL LOCKS 175 • ROUTE TIME 126 HOURS

You must inform us at the time of booking that you intend to take this route and evidence of suitable canal boat experience must be provided.

Visit www.abcboathire.com for more detailed information.

N1 N7 G29

WARWICK & RETURN

7 NIGHTS • CRUISING TIME PER DAY 6HRS • TOTAL LOCKS 72 • ROUTE TIME 38 HOURS

A very popular week cruise with Warwick Castle en route. (Tourist Information 01926 492212 / www.visitwarwick.co.uk) This route can also be completed from Rugby and Union Wharf. Visit www.abcboathire.com for more detailed information.

P6 N1 N3 L13 L18

SHORT BREAKS

WEEKENDS: FRIDAY-SUNDAY (2 NIGHTS)

WEEKENDS: FRIDAY-MONDAY (3 NIGHTS)

MIDWEEK: MONDAY-FRIDAY (4 NIGHTS)

GREAT LINFORD OR FENNY STRATFORD & RETURN

3-4 NIGHTS • CRUISING TIME PER DAY 6½-8HRS • TOTAL LOCKS 16 • ROUTE TIME GREAT LINFORD 14 HRS FENNY STRATFORD 18 HRS

Heading south towards Aylesbury, this route has a taste of everything. The two destinations are separated by the 'new town' of Milton Keynes, where the Grand Union Canal forms the centre piece of the linear park.

P7 N1 L18

CRICK & RETURN

4 NIGHTS • CRUISING TIME PER DAY 6½HRS • TOTAL LOCKS 28 • ROUTE TIME 17 HOURS

Crick and back, along the Grand Union Canal (Leicester Section).

P7 N1 L14 E1

WELFORD & RETURN

4 NIGHTS • CRUISING TIME PER DAY 8½HRS • TOTAL LOCKS 30 • ROUTE TIME 26 HOURS

Welford has plenty of overnight mooring places, with a reservoir and village to explore.

N1 N3

BRAUNSTON OR NAPTON & RETURN

3 NIGHTS • CRUISING TIME PER DAY 8HRS • TOTAL LOCKS 26 • ROUTE TIME BRAUNSTON 15 HOURS NAPTON 19 HOURS

Heading north from Gayton through Weedon and Norton takes the Grand Union to the busy junction with the Oxford Canal. Onwards to Napton is peaceful, lock free and rural.

P7 N1 L18

BOOK YOUR CANAL BOATING BREAK TODAY

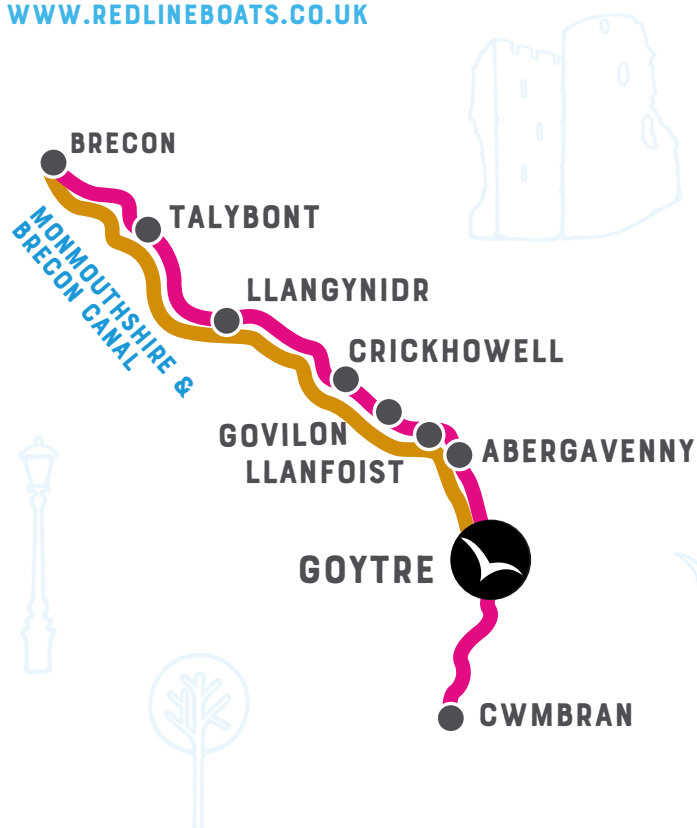
CALL US ON 0330 333 0590 OR EMAIL [INFO@ABCBOATHIRE.COM](mailto:info@abcboathire.com) OR VISIT WWW.ABCBOATHIRE.COM

GOYTRE WHARF

THE MONMOUTHSHIRE & BRECON CANAL IS UNIQUELY LOCATED AWAY FROM ANY OTHER WATERWAY AND OFFERS 36 MILES OF QUIET AND PICTURESQUE COUNTRYSIDE FROM BRECON TO CWMBRAN. IT RUNS THROUGH THE BRECON BEACONS NATIONAL PARK AND HAS JUST A FEW LOCKS AND FANTASTIC VIEWS. THERE IS AN ONSITE CAFÉ AT THE WHARF.

BERTHS AVAILABLE 2 - 8 (SEE BOAT LAYOUT PAGES)

SOUTH WALES, NP7 9EW
TEL: 01873 880516
WWW.REDLINEBOATS.CO.UK



MONMOUTHSHIRE & BRECON CANAL

**7 NIGHTS • CRUISING TIME PER DAY 7.5HRS •
TOTAL LOCKS 12 • ROUTE TIME 32 HOURS**

Enough time to cruise all 36 miles of the Monmouthshire and Brecon Canal.

P3 N4 L24

BRECON & RETURN

**7 NIGHTS • CRUISING TIME PER DAY 4HRS •
TOTAL LOCKS 12 • ROUTE TIME 25 HOURS**

The canal meanders its way through the Brecon Beacons National Park for 36 miles with remarkable diversity of scenery often following the magnificent River Usk. This canal is considerably quieter than others, as it is isolated from the main canal network, but with many local pubs

Please Note: This canal is uniquely shallow in design. It also has numerous low bridges and therefore bicycles and paddleboards cannot be accommodated from this location.

and places to eat nearby, it is arguably one of the most picturesque canals as it offers glorious views of the Brecon Beacons along the way. The canal clings to the mountainside and brings about its uniquely shallow levels. Lime kilns remain as well as an aqueduct dating from 1812. Pontymoile at one end of the canal is a convenient mooring place for Pontypool Leisure Centre with its swimming pool and dry ski slope. Moor at Llangattock and visit Crickhowell a wonderful Georgian town, with excellent shopping and good food.

Crickhowell also has a 13th century castle and a 17th century bridge. Picturesque Talybont-on-Usk rests below the Central Beacons between the Usk and the Canal. Nearby Talybont Reservoir offers bird watching, trout fishing and easy walks to the waterfalls at Blaen y Glyn. Brecon is a charming old market town and one of the most historic settlements in Wales.

Brecon is a popular holiday destination, affording some of the best views of the Brecon Beacons themselves and Pen y Fan - the highest point in Southern Britain at 886m. There is something for everyone as Brecon is home to a cathedral, theatre, cinema, castle ruins and stunning Georgian architecture. Brecon is also a great place to explore the National Park with walking routes, cycle hire and pony trekking all available - and why not visit The Museum of The Royal Regiment of Wales (www.rrw.org.uk)?

P3 N4 L24

**HOLIDAY PROPERTY ALSO AVAILABLE AT THIS LOCATION PLEASE SEE:
WWW.ABCHOLIDAYCOTTAGES.COM**

SHORT BREAKS

**WEEKENDS: FRIDAY-SUNDAY (2 NIGHTS)
WEEKENDS: FRIDAY-MONDAY (3 NIGHTS)
MIDWEEK: MONDAY-FRIDAY (4 NIGHTS)**

LLANGYNIDR & RETURN

**3 NIGHTS • CRUISING TIME PER DAY 7HRS •
TOTAL LOCKS 0/2 • ROUTE TIME 14 HOURS**

You can choose a leisurely lock-free cruise with fine views along the dramatic Usk Valley by turning below the lock at Llangynidr village or, if you want the experience of locking the boat, you can turn just below the first lock.

P3 N4 L24

TALYBONT-ON-USK & RETURN

**4 NIGHTS • CRUISING TIME PER DAY 7HRS •
TOTAL LOCKS 10 • ROUTE TIME 18 HOURS**

This trip takes you further up the canal, climbing 5 gorgeous locks passing through the Ashford Tunnel to the village of Talybont-on-Usk, where you can still see the wharf with its lime kilns and the old tramroad up the side of the mountain.

P3 N4 L24



**BOOK YOUR CANAL BOATING BREAK TODAY
CALL US ON 0330 333 0590 OR EMAIL INFO@ABCBOATHIRE.COM OR VISIT WWW.ABCBOATHIRE.COM**

HILPERTON

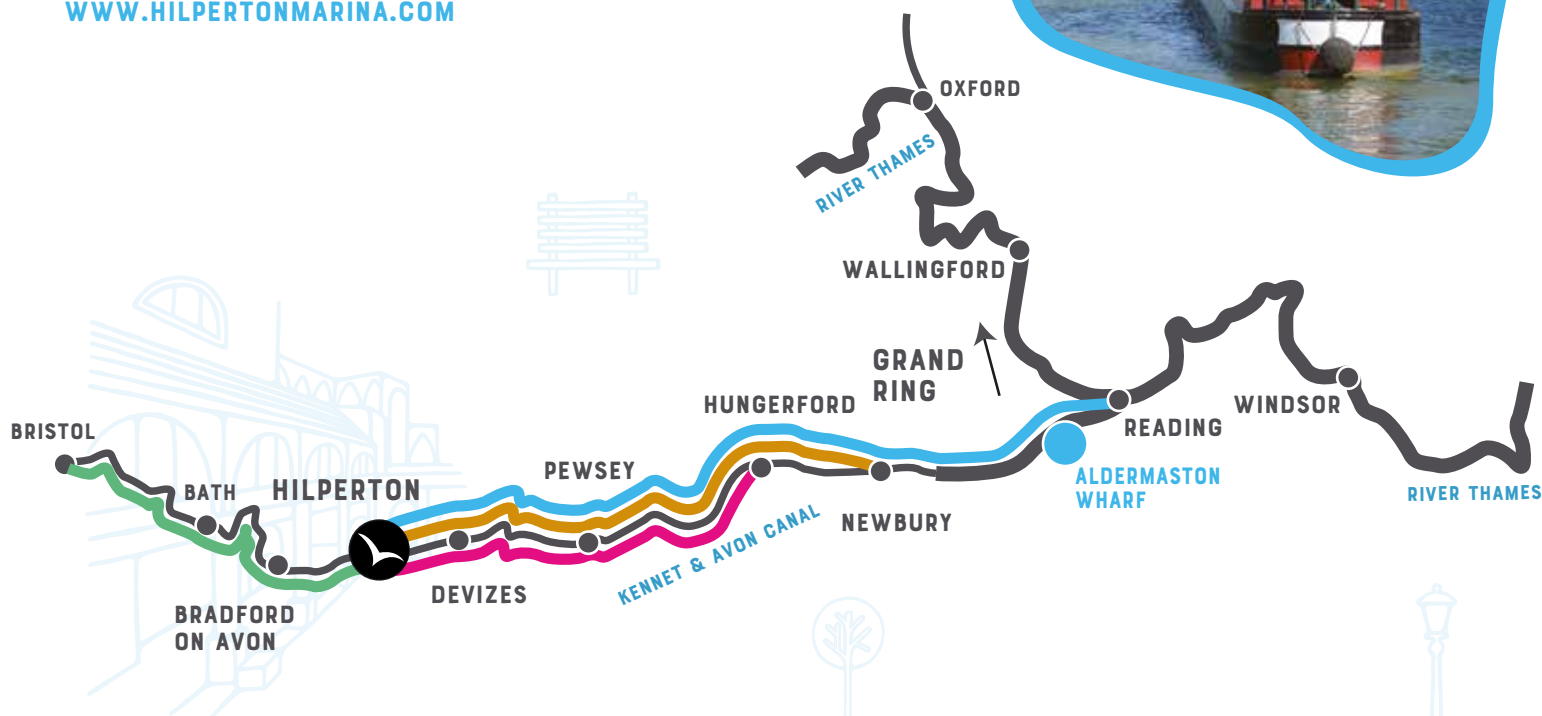
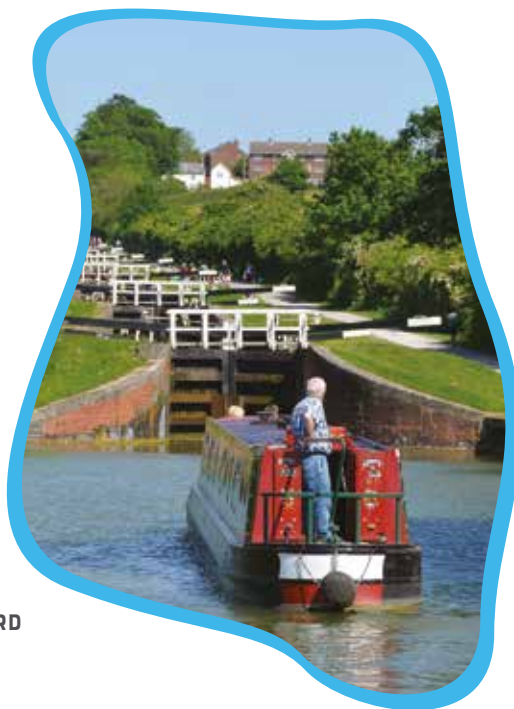
OUR MOST SOUTHERLY BASE, HILPERTON IS WELL LOCATED ON THE WESTERN END OF THE KENNET & AVON CANAL, OFTEN CONSIDERED ONE OF THE VERY BEST FOR NATURAL BEAUTY AND WILDLIFE.

**BERTHS AVAILABLE 2 - 12
(SEE BOAT LAYOUT PAGES)**

WILTSHIRE, BA14 8RS

TEL: 01225 765243

WWW.HILPERTONMARINA.COM



HUNGERFORD & RETURN

**7 NIGHTS • CRUISING TIME PER DAY 7HRS •
TOTAL LOCKS 120 • ROUTE TIME 50 HOURS**

Devizes is a historic market town which hosts a traditional market every Thursday. It is one of the largest market places in the West Country. Look out for the Wadworth Brewery Shire Horse Dray, which still delivers to the towns Public Houses. For Wadworth Brewery trips see www.wadworth.co.uk. The highest point of the Kennet & Avon is marked by the 502 yard Bruce Tunnel. The canal then follows close alongside the Great Western main railway line through the Bedwyns - Great & Little - and down to Hungerford. You'll also pass by Savernake Forest, an ancient woodland mentioned in the Domesday Book.

P8 N7 L20 H1 E2

NEWBURY & RETURN

**10-11 NIGHTS • CRUISING TIME PER DAY 5½HRS •
TOTAL LOCKS 140 • ROUTE TIME 60 HOURS**

Beyond Hungerford the canal shares the valley with both the railway and the River Kennet. The Kennet & Avon Canal is so central to Newbury that the main shopping street passes directly over it. Take a day out at the races and visit Newbury Race Course.
(01635 40015 / www.racecoursenewbury.co.uk).

P8 N7 L20 H1 E2

READING & RETURN

**14 NIGHTS • CRUISING TIME PER DAY 6HRS •
TOTAL LOCKS 186 • ROUTE TIME 85 HOURS**

Some of the very best countryside in the UK canal system, this route will take you through a variety of towns and villages to Reading. Blakes Lock Museum. (social & industrial history / 0118 939 0918). During your travels you'll get to experience Reading Museum, Blakes Lock Museum, and the Museum of English Rural Life. If you prefer shopping, why not stop by the local retail park, The Oracle.

P8 N7 L20 H1 E2

BRISTOL & RETURN

**7 NIGHTS • CRUISING TIME PER DAY 4HRS •
TOTAL LOCKS 28 • ROUTE TIME 25 HOURS**

The route goes through the town of Bradford on Avon before passing over two Aqueducts on the way to Bath. At Dundas Aqueduct is the entrance to the 'Somerset Coal Canal' and nearby, a visitor centre. During your travels, stop off at the UNESCO World Heritage City of Bath and explore the Roman Baths, Bath Abbey and the Royal Crescent. Having followed the route of the River Avon by canal, after Bath the navigation uses the River itself, reverting to canal to divert into Bristol city centre. Stunning weirs accompany each river lock down to Bristol. Visitor moorings are available right in the centre of the city, and in the floating harbour mooring, charges apply. Reminders of the route's industrial history, such as the brass mill at Kelston, are found within rolling valley countryside.

P8 N7 L20 H1 E2

SHORT BREAKS

**WEEKENDS: FRIDAY-SUNDAY (2 NIGHTS)
WEEKENDS: FRIDAY-MONDAY (3 NIGHTS)
MIDWEEK: MONDAY-FRIDAY (4 NIGHTS)**

DEVIZES & RETURN

**4 NIGHTS • CRUISING TIME PER
DAY 7HRS • TOTAL LOCKS 72 •
ROUTE TIME 21 HOURS**

The spectacular Devizes flight consists of 29 wide beam locks, rising by 237 feet over just two miles.

P8 N7 L20 H1 E2

BATH & RETURN

**3 NIGHTS • CRUISING TIME PER
DAY 5HRS • TOTAL LOCKS 2 •
ROUTE TIME 12 HOURS**

The UNESCO World Heritage City of Bath is without doubt worthy of exploration. Turn and moor before Bath Top Lock and take an easy walk into the city centre.

P8 N7 L20 H1 E2

BATH & RETURN

**4 NIGHTS • CRUISING TIME PER
DAY 5HRS • TOTAL LOCKS 14 •
ROUTE TIME 18 HOURS**

The canal skirts around the city and many of its attractions are within a 15 minute walk. Descend the 6 lock Bath Flight to explore the River Avon.

P8 N7 L20 H1 E2

BRADFORD ON AVON / BOTTOM OF CAEN & RETURN

**3 NIGHTS • CRUISING TIME PER
DAY 7HRS • TOTAL LOCKS 14 •
ROUTE TIME 14 HOURS**

For an easy weekend combining cruising and exploring, spend a day in Bradford and another cruising to the base of Caen Hill Locks.

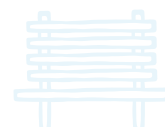
P8 N7 L20 H1 E2

KINGS ORCHARD

OUR BASE AT KINGS ORCHARD IS LOCATED CLOSE TO THE CITY OF LICHFIELD AND HAS MUCH TO EXPLORE. LICHFIELD CATHEDRAL IS WORLD FAMOUS, AND IS THE ONLY THREE-SPIRED MEDIEVAL CATHEDRAL IN THE UK.

BERTHS AVAILABLE 2 - 8
(SEE BOAT LAYOUT PAGES)

LICHFIELD, WS13 8PY
TEL: 01543 433608
WWW.KINGSORCHARDMARINA.COM



MARKET DRAYTON & RETURN

**7 OR 10 NIGHTS • CRUISING TIME PER DAY 8.5HRS •
TOTAL LOCKS 38 • ROUTE TIME 57 HOURS**

Through Fradley Junction, Great Haywood, Tixall Wide, Penkridge, Atherley Junction, Tyrley Locks and back. In a parallel world reflecting the evolution of transport, with unforgettable days full of tranquil drama and whimsy, your route will lead you under bridges, over aqueducts and through unusual canal cuttings. It will take you on a richly green tour that skims the distant outskirts of the urban Midlands before bursting into the tranquil haven of Shropshire countryside.

N3 N4 P1 P5 L10 L12

THE BLACK COUNTRY RING

**7-10 NIGHTS • CRUISING TIME PER DAY 5-7.5HRS •
TOTAL LOCKS 79 • ROUTE TIME 47 HOURS**

A route with a mix of rural and urban, taking in parts of the Coventry Canal, Trent & Mersey Canal, Staffordshire & Worcestershire Canal, Birmingham Canal Navigations and Birmingham & Fazeley Canal. This ring, which includes three tunnels, several aqueducts and 79 locks - can be done in 7 nights or a more relaxing 14 nights.

Your route swings from lock-free relaxation to energetic lock flights, from rural to urban, and contrasts the winding and straight routes by two of the greatest canal engineers. This is a journey of junctions – Fradley, Great Haywood, Aldersley, Salford, Fazeley - from the sprawling green territory of Cannock Chase to the historic canal basin in Birmingham city centre.

N3 P1 L12

WARWICK & RETURN

**7 NIGHTS • CRUISING TIME PER DAY 7.5HRS •
TOTAL LOCKS 102 • ROUTE TIME 48 HOURS**

A scenic journey through the heart of England's canal network. Departing from Kings Orchard on the Coventry Canal, you'll head south, joining the Birmingham & Fazeley Canal before navigating the iconic Hatton Flight of 21 locks near Warwick. The route meanders through picturesque countryside, charming villages, and historic industrial landscapes, providing a mix of tranquility and heritage. Key highlights include the Grand Union Canal and views of Warwick Castle. The return trip follows the same route, offering a relaxed and rewarding experience.

N3 N4 P1 P5 L10 L12

COVENTRY & RETURN

**7 NIGHTS • CRUISING TIME PER DAY 5HRS •
TOTAL LOCKS 26 • ROUTE TIME 32 HOURS**

A peaceful and manageable journey along the Coventry Canal. You cruise through attractive countryside and past quiet villages before reaching the historic city of Coventry. Along the way, you'll pass picturesque moorings and traditional canal features, including bridges and old wharfs. Coventry Basin, the destination point, offers a tranquil mooring spot with easy access to the city's cultural attractions, such as Coventry Cathedral and the Transport Museum. The return trip follows the same scenic route, making it an ideal short break for boaters seeking history and relaxation.

N3 P6 L13

SHORT BREAKS

**WEEKENDS: FRIDAY-SUNDAY (2 NIGHTS)
WEEKENDS: FRIDAY-MONDAY (3 NIGHTS)
MIDWEEK: MONDAY-FRIDAY (4 NIGHTS)**

TIXALL WIDE AND RETURN

**3 NIGHTS • CRUISING TIME PER DAY 6HRS •
TOTAL LOCKS 10 • ROUTE TIME 15 HOURS**

Through Fradley Junction, Rugeley, Great Haywood and back. This route skips through sheep-filled countryside with idyllic locks and striking red-brick bridges. Secret stories lie in this landscape of outstanding beauty, where you'll learn new tiller skills, meet wildlife and discover the story of a posh rebel who insisted a canal be shaped for his pleasure.

N3 P1 L12

SAWLEY AND RETURN

**4 NIGHTS • CRUISING TIME PER DAY 8.5HRS •
TOTAL LOCKS 34 • ROUTE TIME 30 HOURS**

Through Fradley, Burton-on-Trent, Shardlow and back. This journey is rural and even remote at times, yet trips in and out of colourful hubs that tell gripping stories of canal-life to the passing boater. There are tales of medieval times and the English language, special water which changed a town's fortunes, and a vital inland port with links to pottery, the Industrial Revolution and 'canal mania'.

N3 P6

BOOK YOUR CANAL BOATING BREAK TODAY

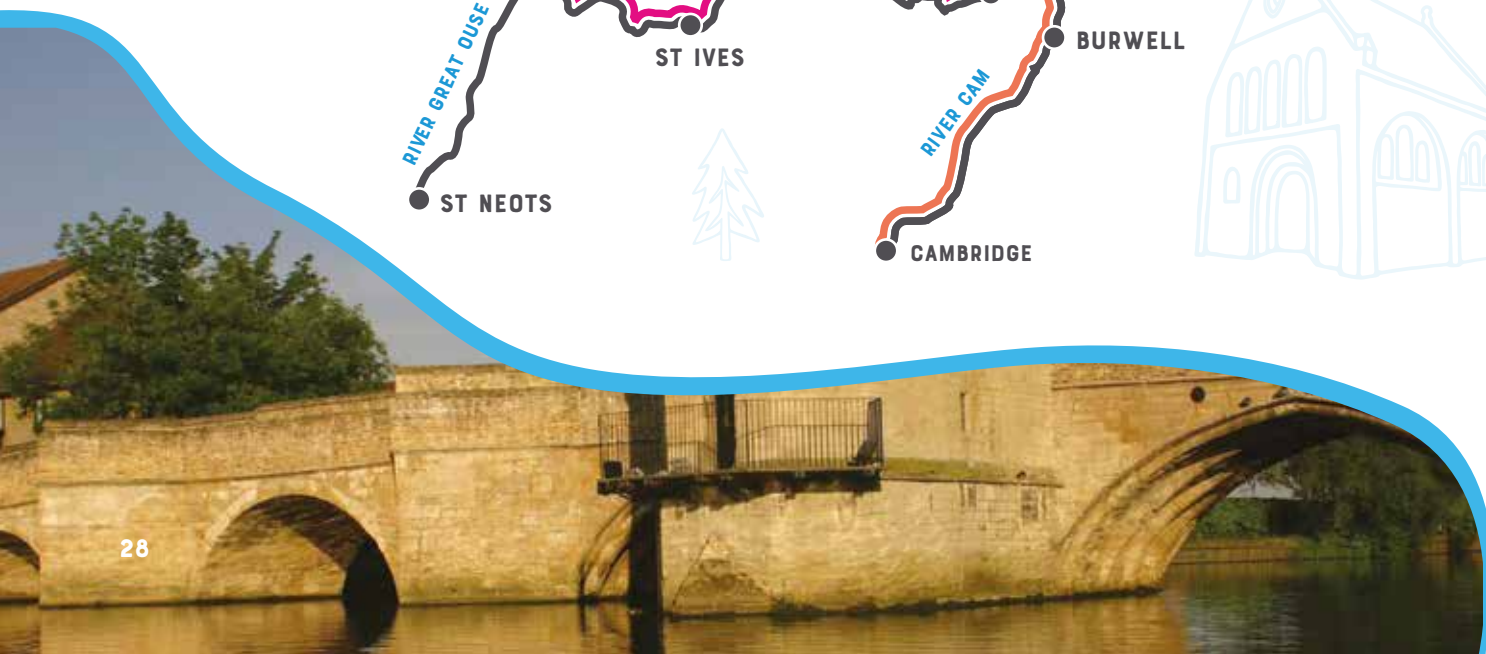
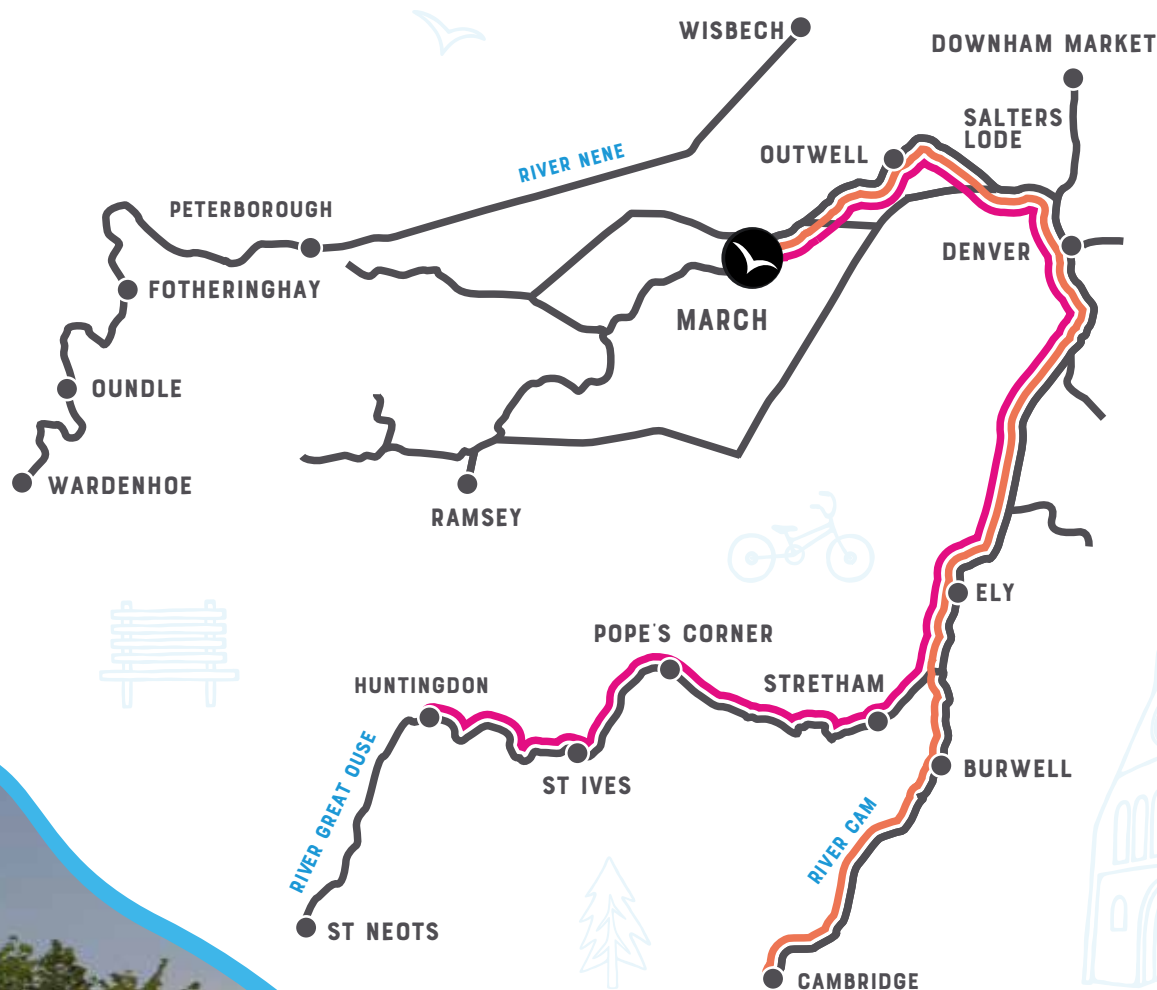
CALL US ON 0330 333 0590 OR EMAIL INFO@ABCBOATHIRE.COM OR VISIT WWW.ABCBOATHIRE.COM

MARCH

OUR BASE IN MARCH, CAMBRIDGESHIRE IS NESTLED IN THE FENS ON THE MIDDLE LEVEL WATERWAYS CLOSE TO THE RIVER OUSE AND RIVER NENE.

BERTHS AVAILABLE 2 - 6
(SEE BOAT LAYOUT PAGES)

CAMBRIDGESHIRE, PE15 0AU
TEL: 01354 652770
WWW.MARCHWHARF.CO.UK



CAMBRIDGE & RETURN

**7 NIGHTS • CRUISING TIME PER DAY 5HRS •
TOTAL LOCKS 10 • ROUTE TIME 30 HOURS**

Through Marmont Priory Lock, Salter's Lode Lock, Denver Tidal Sluice and back. Experience landscapes full of sky, and skies full of birds along this route that communes with nature. The journey also takes you travelling through time to touch some of Britain's most potent history. You'll cruise across a place described as the 'Holy Land of the English' because of its cathedrals, and its celestial reputation makes sense as you steep in far-reaching panoramas of the charismatic flat fenlands. Heading along the River Cam, amongst the silent echoes of Geoffrey Chaucer's Canterbury Tales, you'll pass through some locks and then reach Cambridge, world famous for its university, founded in 1209. The city is bursting with places to eat, and you can also shop and enjoy the cerebral culture of museums and art galleries.

Whilst sightseeing in the city, you may hear the seats of the church and choirs of Kings College Chapel descanting to the fens - and in the stillness you'll know a feeling of remoteness and tranquillity is calling for your return journey.

IM2, IM3, L25 & L26

Please Note: Due to low bridges bicycles and paddleboards cannot be accommodated from this location.

OUNDLLE & RETURN

**7 NIGHTS • CRUISING TIME PER DAY 6½HRS •
TOTAL LOCKS 40 • ROUTE TIME 36 HOURS**

A cruise from March Marina to Oundle and back offers a scenic and leisurely journey through the heart of the Cambridgeshire and Northamptonshire waterways. Departing from March Marina, you join the tranquil waters of the Middle Level Navigations, passing through a network of peaceful fenland drains and rivers. The route soon meets the River Nene, where the landscape opens into picturesque countryside dotted with windmills, farmland, and traditional villages.

As you progress toward Oundle, you'll experience a series of well-maintained locks, adding a hands-on element to the trip. Wildlife is abundant along the route, with kingfishers, swans, and herons often accompanying the journey. Oundle itself is a charming market town with historic stone buildings, inviting pubs, and boutique shops—perfect for a short stop or overnight mooring. Here, you can explore local heritage, sample regional cuisine, or simply relax by the riverside.

The return leg offers a fresh perspective of the same idyllic scenery, allowing time to enjoy the serenity of the waterways at an unhurried pace. This round trip combines peaceful cruising with opportunities for exploration, making it ideal for boating enthusiasts seeking a blend of nature, heritage, and relaxation on England's inland waterways.

IM1 IM2 & L25

SHORT BREAKS

**WEEKENDS: FRIDAY-SUNDAY (2 NIGHTS)
WEEKENDS: FRIDAY-MONDAY (3 NIGHTS)
MIDWEEK: MONDAY-FRIDAY (4 NIGHTS)**

ELY & RETURN

**4 NIGHTS • CRUISING TIME PER DAY 6HRS •
TOTAL LOCKS 6 • ROUTE TIME 18 HOURS**

Through Marmont Priory Lock, Salter's Lode Lock, Denver Tidal Sluice and back. This route takes the water traveller on a journey bursting at its banks with history and wildlife - from the town that was once an island, following tranquil waters and wide skies, adventuring through the mighty Denver Tidal Sluice and reaching Cromwell's home territory in Ely.

IM2, IM3, L25 & L26

WANSFORD & RETURN

**3 NIGHTS • CRUISING TIME PER DAY 8HRS •
OR 4 NIGHTS • CRUISING TIME PER DAY 5½HRS •
TOTAL LOCKS 10 • ROUTE TIME 20 HOURS**

Through Ashline Lock, Orton Lock and back. An idyllic journey through wide countryside bursting with wildlife and quintessentially English charms. As well as mingling with geese, swans and precious species of endangered wildlife, this route includes sites of Tudor history and a little blue tank engine called Thomas.

IM1 IM2 & L25



BOOK YOUR CANAL BOATING BREAK TODAY

CALL US ON 0330 333 0590 OR EMAIL [INFO@ABCBOATHIRE.COM](mailto:info@abcboathire.com) OR VISIT [WWW.ABCBOATHIRE.COM](http://www.abcboathire.com)

NANTWICH

DISCOVER NANTWICH CANAL CENTRE,
YOUR GATEWAY TO UNFORGETTABLE
CANAL HOLIDAYS IN HISTORIC CHESHIRE.
SET ON THE PEACEFUL SHROPSHIRE
UNION CANAL AND JUST A SHORT WALK
FROM THE VIBRANT MARKET TOWN,
IT'S THE PERFECT BASE FOR RELAXED
CRUISING NORTH TO CHESTER OR SOUTH
THROUGH SCENIC COUNTRYSIDE.



BERTHS AVAILABLE 2 - 8
(SEE BOAT LAYOUT PAGES)

NANTWICH, CW5 8LB

TEL: 01270 625122

WWW.NANTWICHCANALCENTRE.COM



FOUR COUNTIES RING

**10-14 NIGHTS • CRUISING TIME PER DAY 4.5 - 9HRS •
TOTAL LOCKS 94 • ROUTE TIME 61 HOURS**

Departing from Nantwich, the Four Counties Ring is a rewarding circular journey through the heart of England's canal network, covering Cheshire, Staffordshire, Shropshire, and the West Midlands. This popular route offers a rich mix of peaceful countryside, historic towns, impressive engineering, and varied cruising. Along the way, you'll navigate iconic waterways such as the Trent & Mersey, Shropshire Union, and Staffordshire & Worcestershire Canals. Highlights include the dramatic Harecastle Tunnel, the lock flights at Heartbreak Hill, and tranquil stretches through rural Shropshire. Typically completed over 1–2 weeks, this route is perfect for those seeking a boating holiday with a balance of relaxation and challenge.

N4 P5 L10

LYMM & RETURN

**7 NIGHTS • CRUISING TIME PER DAY 5½HRS •
TOTAL LOCKS 18 • ROUTE TIME 35 HOURS**

Embark on a peaceful round-trip from Nantwich to the vibrant village of Lymm, following the scenic and largely lock-free waters of the Bridgewater Canal. This route takes you through the heart of rural Cheshire, offering easy cruising, open countryside views, and welcoming canal-side pubs along the way. Lymm itself is a charming destination with boutique shops, cosy cafés, and a historic centre perfect for exploring. Ideal for a laid-back getaway, this journey offers a blend of relaxation and gentle adventure for all experience levels.

N4 P5 L5 L10

BREWOOD & RETURN

**7 NIGHTS • CRUISING TIME PER DAY 5½HRS •
TOTAL LOCKS 56 • ROUTE TIME 35 HOURS**

Journey from Nantwich to the charming village of Brewood and back for a relaxed canal holiday steeped in countryside charm. This out-and-back route follows the scenic Shropshire Union Canal, known for its wide, lock-free stretches and peaceful, tree-lined cuttings. Pass through quiet villages, rolling farmland, and occasional aqueducts as you make your way south. Brewood offers a warm welcome with its historic architecture, cosy pubs, and traditional shops—an ideal spot to pause and explore. Perfect for a short break or leisurely week away, this route promises stress-free cruising and timeless rural beauty.

N4 P5 L10

LLANGOLLEN & RETURN

**7 - 10 NIGHTS • CRUISING TIME PER DAY 7½HRS •
TOTAL LOCKS 42 • ROUTE TIME 49 HOURS**

Set off from Nantwich and experience one of the UK's most picturesque canal routes. Glide through the gentle Cheshire countryside, past historic market towns and charming villages, before joining the stunning Llangollen Canal. This route features peaceful locks, iconic lift bridges, and breathtaking highlights like the Pontcysyllte Aqueduct – a UNESCO World Heritage Site. Perfect for both novice and seasoned boaters, the Nantwich to Llangollen journey blends tranquil cruising with unforgettable scenery and engineering marvels.

N4 P3 L8 H2

SHORT BREAKS

**WEEKENDS: FRIDAY-SUNDAY (2 NIGHTS)
WEEKENDS: FRIDAY-MONDAY (3 NIGHTS)
MIDWEEK: MONDAY-FRIDAY (4 NIGHTS)**

CHESTER & RETURN

**4 NIGHTS • CRUISING TIME PER
DAY 7HRS • TOTAL LOCKS 22 •
ROUTE TIME 17 HOURS**

Enjoy a memorable journey to the historic Roman city of Chester and back. Following the gentle Shropshire Union Canal, this route offers relaxed cruising through the picturesque Cheshire countryside, with only a handful of locks along the way. Pass charming villages and canal-side pubs before arriving in Chester, where you can moor close to the city walls. Once there, explore its rich heritage—from the famous Roman amphitheatre and medieval rows to boutique shopping and riverside dining.

N4 P3 L8

MARKET DRAYTON & RETURN

**3 NIGHTS • CRUISING TIME PER
DAY 7HRS • TOTAL LOCKS 44 •
ROUTE TIME 16 HOURS**

Cruise to Market Drayton along the Shropshire Union Canal to the historic home of gingerbread. A delightful destination with its traditional market, local pubs, and welcoming atmosphere. This out-and-back journey is a great way to experience canal life without the need for a full week away.

N4 P5 L10

MIDDLEWICH & RETURN

**3 NIGHTS • CRUISING TIME PER
DAY 5HRS • TOTAL LOCKS 14 •
ROUTE TIME 13 HOURS**

Ideal for novices, a relaxed and mostly rural cruise through the Cheshire countryside to the Roman town of Middlewich, famed for its salt production. The first couple of hours are lock-free, meaning you can get used to handling your narrowboat before getting your windlass ready!

N4 P5 L10

BOOK YOUR CANAL BOATING BREAK TODAY

CALL US ON 0330 333 0590 OR EMAIL INFO@ABCBOATHIRE.COM OR VISIT WWW.ABCBOATHIRE.COM

SPRINGWOOD HAVEN

FOR PEACE AND TRANQUILLITY, START FROM SPRINGWOOD HAVEN, WHERE YOU'LL ENJOY THE COUNTRYSIDE VIEWS, BEFORE EMBARKING ON JOURNEYS INTO BEAUTIFUL TOWN SCENERY. THIS IS A GREAT START LOCATION TO EXPLORE THE ASHBY CANAL. GOT TO WWW.ABCBOATHIRE.COM FOR MORE INFORMATION

BERTHS AVAILABLE 2 - 8 (SEE BOAT LAYOUT PAGES)

WARWICKSHIRE, CV10 ORZ

TEL: 02476 393676

WWW.SPRINGWOODHAVEN.CO.UK



BANBURY & RETURN

**7 NIGHTS • CRUISING TIME PER DAY 8.5HRS •
TOTAL LOCKS 50 • ROUTE TIME 54 HOURS**

This is a journey of trade and heritage, accompanied by the rhythms of poetry, music and nursery rhymes. Meandering along one of engineer James Brindley's renowned contour-hugging canals, the peaceful countryside calls out with symbolic windmills, quirky huts and wartime memories.

N3 N1 P6 P7 L14 L17

MARKET HARBOUROUGH & RETURN

**7 NIGHTS • CRUISING TIME PER DAY 9HRS •
TOTAL LOCKS 54 • ROUTE TIME 59 HOURS**

A relaxing cruise, as the canal winds through uncluttered countryside. This route offers the rare chance to revel in remote landscapes with the drama of an idyllic lock flight and the heritage of two of Britain's canals' most loved marinas.

N3 P6 P7 L14

TIXALL WIDE & RETURN

**7 NIGHTS • CRUISING TIME PER DAY 7HRS • TOTAL
LOCKS 36 • ROUTE TIME 37 HOURS**

With stories of canal companies, pottery makers, and aristocrats who shaped their surroundings for their pleasure, you'll meet wildlife and learn about language and perhaps new tiller skills!

N3 P5 P6 L10 L13

STOKE BRUERNE & RETURN

**7 NIGHTS • CRUISING TIME PER DAY 7½HRS •
TOTAL LOCKS 34 • ROUTE TIME 49 HOURS**

Your rural cruise leads from iron bridges to idyllic thatched cottages, from sport to shoes. On a journey which tells of world-renowned engineering and mathematics, you will discover more of the heritage of the canals and ironically of our modern world.

N3 N1 P6 P7 L14 L18

THE EAST MIDLANDS & LEICESTER RING

**10-14 NIGHTS • CRUISING TIME PER DAY 6-8½HRS •
TOTAL LOCKS 100 • ROUTE TIME 78 HOURS**

This is a varied route which takes in the Coventry Canal, parts of the Oxford Canal, Grand Union Canal Leicester Line, the River Soar, a short section of the River Trent and part of the Trent & Mersey Canal.

N3 P6 P10

THE WARWICKSHIRE RING

**10-14 NIGHTS • CRUISING TIME PER DAY 4½-6½HRS
• TOTAL LOCKS 120 • ROUTE TIME 60 HOURS**

This route takes in parts of the Oxford Canal, the Coventry Canal, the Birmingham & Fazeley Canal, Stratford Canal, Worcester & Birmingham Canal and the Grand Union Main Line. A great mix of rural and urban cruising.

N3 P6 L13

SHARDLOW & RETURN

**14 NIGHTS • CRUISING TIME PER DAY 7½HRS •
TOTAL LOCKS 58 • ROUTE TIME 49 HOURS**

A route with tales of medieval times and reeds, special water used by monks to change a town's fortunes and a vital inland port with links to pottery, the Industrial Revolution and 'canal mania'.

N3 P6

SHORT BREAKS

**WEEKENDS: FRIDAY-SUNDAY (2 NIGHTS)
WEEKENDS: FRIDAY-MONDAY (3 NIGHTS)
MIDWEEK: MONDAY-FRIDAY (4 NIGHTS)**

BRAUNSTON & RETURN

**4 NIGHTS • CRUISING TIME PER DAY 7½HRS •
TOTAL LOCKS 8 • ROUTE TIME 26 HOURS**

A relaxing cruise through mostly open countryside, this is a journey of junctions and battles between two rival canals, the Oxford and the Grand Union.

N3 P6 L14

FRADLEY JUNCTION & RETURN

**3-4 NIGHTS • CRUISING TIME PER DAY 7HRS •
TOTAL LOCKS 26 • ROUTE TIME 25 HOURS**

Treading a rural route through nature reserves and pools left behind by industry, this cruise winds gently through beautiful countryside.

N3 P6

NAPTON JUNCTION & RETURN

**4 NIGHTS • CRUISING TIME PER DAY 9HRS •
TOTAL LOCKS 8 • ROUTE TIME 30 HOURS**

A relaxing cruise through open countryside, you'll discover sporting history, Horseley iron bridges and symbolic windmills.

N3 P6 L13

SNARESTONE & RETURN

**3 NIGHTS • CRUISING TIME PER DAY 8½HRS •
TOTAL LOCKS 0 • ROUTE TIME 20 HOURS**

This peaceful lock-free route meanders through countryside and mingles pleasantly with wildlife.

N3 P6 L13

BOOK YOUR CANAL BOATING BREAK TODAY

CALL US ON 0330 333 0590 OR EMAIL INFO@ABCBOATHIRE.COM OR VISIT WWW.ABCBOATHIRE.COM

WHITCHURCH

FOR TRANQUILLITY AND BEAUTY, START FROM WHITCHURCH AND MEANDER ALONG THE LLANGOLLEN AND SHROPSHIRE UNION CANALS, WHERE YOU'LL ENJOY THE WIDE OPEN SPACES AND HILLSIDES OF WALES. YOU CAN VISIT THE PONTCYSYLLE AQUEDUCT IN A 4 NIGHT OR WEEK BREAK FROM THIS BASE.

BERTHS AVAILABLE 2 - 10 (SEE BOAT LAYOUT PAGES)

SHROPSHIRE, SY13 3AA

TEL: 01948 662012

WWW.WHITCHURCHMARINA.COM



LLANGOLLEN & RETURN

**7 NIGHTS • CRUISING TIME PER DAY 4HRS •
TOTAL LOCKS 4 • ROUTE TIME 27 HOURS**

The Llangollen Canal is a varied route with isolated sheep pastures, ancient peat mosses and tree-lined lakes that lead to the foothills of Snowdonia. From Whitchurch Marina, you can complete a relaxing week route to Llangollen going over the Pontcysyllte Aqueduct or a 4 night short break (cruising time minimum 8 hours per day with 4 locks). Visit www.abcboathire.com for more detailed information.

P3 N4 L8 H2

CHESTER & RETURN

**7 NIGHTS • CRUISING TIME PER DAY 5HRS •
TOTAL LOCKS 66 • ROUTE TIME 35 HOURS**

Visit the historic city of Chester with its shopping, restaurants, the River Dee and its spectacular cathedral (see www.visitchester.com for more details). This route can also be completed from our Wrenbury, Blackwater or Anderton marinas. Visit www.abcboathire.com for more detailed information.

P3 N4 L8

CALDON CANAL

**14 NIGHTS • CRUISING TIME PER DAY 7½HRS •
TOTAL LOCKS 136 • ROUTE TIME 77 HOURS**

Another longer route from Whitchurch Marina. Visit www.abcboathire.com for more detailed information.

P3 P5 N4 L8 L10

AUDLEM & RETURN

**7 NIGHTS • CRUISING TIME PER DAY 6HRS •
TOTAL LOCKS 50 • ROUTE TIME 29 HOURS**

(includes 3 staircase locks)

This route will take you up the Llangollen Canal and then down the Shropshire Union. Audlem is famous for its run of 15 locks on the Shropshire Union Canal. Interpretation panels by the towpath in Audlem describe the operation of locks and the canal's history.

P3 N4 L8

THE CHESHIRE RING

**14 NIGHTS • CRUISING TIME PER DAY 6HRS •
TOTAL LOCKS 137 • ROUTE TIME 82 HOURS**

This route can be completed from Whitchurch, Blackwater Meadow or Wrenbury Marina. Visit www.abcboathire.com for more detailed information.

P3 P5 N4 N5 L5 L8

FOUR COUNTIES RING

**10-14 NIGHTS • CRUISING TIME PER DAY 6HRS •
TOTAL LOCKS 132 • ROUTE TIME 79 HOURS**

Travel up the canal to the Shropshire Union to begin the ring and then complete it from 11 to 14 days depending on how leisurely you want to take it. Visit www.abcboathire.com for more detailed information.

P3 P5 N4 L8 L10

SHORT BREAKS

**WEEKENDS: FRIDAY-SUNDAY (2 NIGHTS)
WEEKENDS: FRIDAY-MONDAY (3 NIGHTS)
MIDWEEK: MONDAY-FRIDAY (4 NIGHTS)**

WRENBURY & RETURN

**3 NIGHTS • CRUISING TIME PER DAY 5HRS •
TOTAL LOCKS 20 • ROUTE TIME 11 HOURS**

Travel between our Whitchurch and Wrenbury Marinas on this picturesque canal.

P3 N4 L8 H2

ELLESMERE & RETURN

**3 NIGHTS • CRUISING TIME PER DAY 5½HRS •
TOTAL LOCKS 0 • ROUTE TIME 11 HOURS**

The trip into Ellesmere is through an area of beauty with a series of Ice-Age lakes known as 'meres'.

P3 N4 L8 H2

HURLESTON JUNCTION & RETURN

**3 NIGHTS • CRUISING TIME PER DAY 9HRS •
TOTAL LOCKS 32 • ROUTE TIME 19 HOURS**

For those wanting a bit more activity, you can cruise east towards the English end of the canal.

P3 N4 L8 H2

NANTWICH & RETURN

**4 NIGHTS • CRUISING TIME PER DAY 7HRS •
TOTAL LOCKS 40 • ROUTE TIME 21 HOURS**

Further down from Hurleston Junction is Nantwich and its aqueduct.

P3 N4 L8 H2

WORCESTER

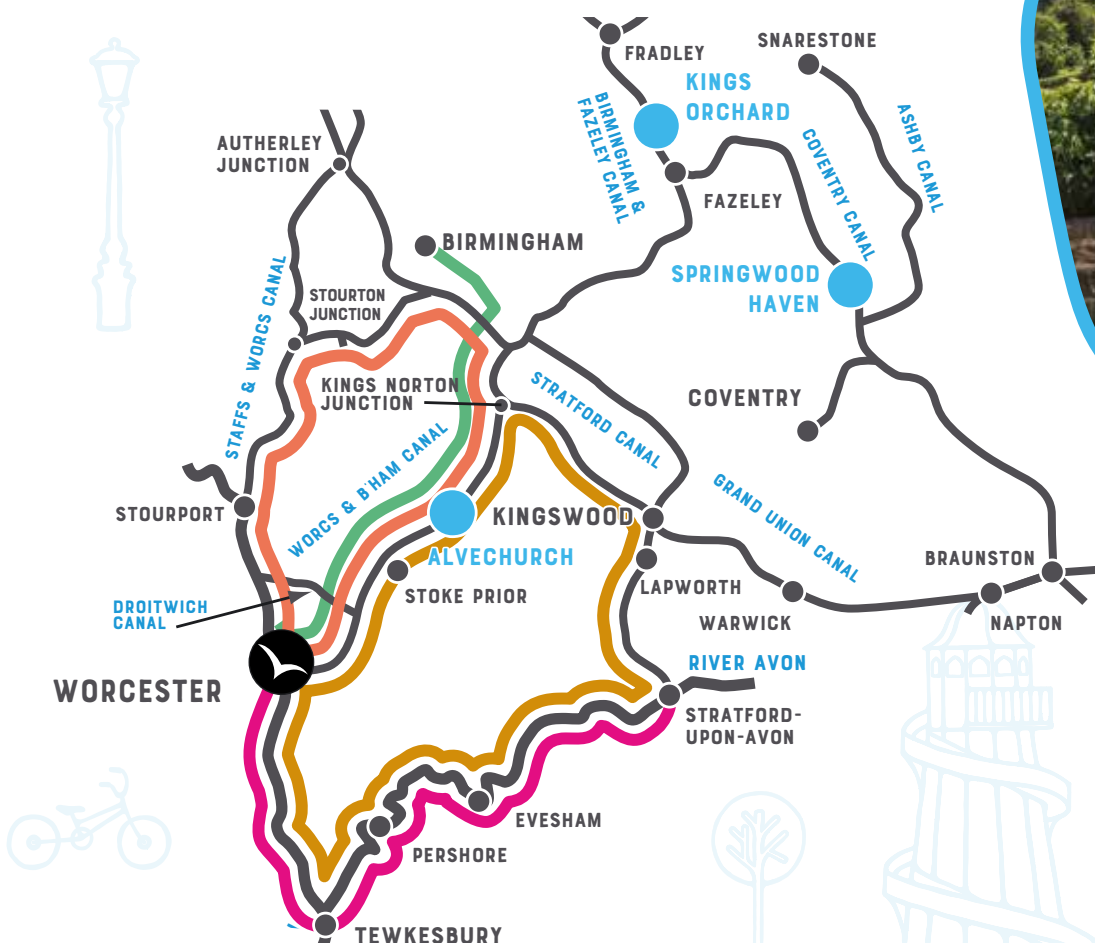
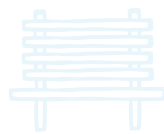
THE CITY OF WORCESTER IS LOCATED ON THE WORCESTER AND BIRMINGHAM CANAL, OVERLOOKED BY THE 12TH CENTURY WORCESTER CATHEDRAL. IT IS HOME TO THE LEA & PERRINS FACTORY WHERE THE TRADITIONAL WORCESTERSHIRE SAUCE IS MADE, AS WELL AS BEING THE BIRTHPLACE OF THE COMPOSER SIR EDWARD ELGAR. THE RE-OPENING OF THE DROITWICH CANALS HAS CREATED A CRUISING RING FOR BOATERS. THE DROITWICH RING CAN EASILY BE COMPLETED IN A WEEKEND'S BOATING.

BERTHS AVAILABLE 2 - 10 (SEE BOAT LAYOUT PAGES)

WORCESTERSHIRE, WR1 2SE

TEL: 01905 734160

WWW.WORCESTERMARINA.COM





STOURPORT RING

**7 NIGHTS • CRUISING TIME PER DAY 7 1/2 HRS •
TOTAL LOCKS 116 • ROUTE TIME 52 HOURS**

It is recommended to travel this ring clockwise from Worcester Marina heading out onto the River Severn on the first day of cruising. Love trains? Why not see if you can plan time to experience the steam trains on Severn Valley Railway (www.svr.co.uk). The Stourport Ring visits three contrasting cities Worcester, Wolverhampton and Birmingham taking in urban views and countryside scenes. From the River Severn you will reach Stourport Basin with The Treasure Island Amusement Park and award winning fish and chip shops, which gives it a seaside holiday feel. For a slightly different route, you might want to go onto the Droitwich Canal, which can also be travelled from Alvechurch Marina.

P1 N2 L16

AVON RING

**10-14 NIGHTS • CRUISING TIME PER DAY 6 HRS •
TOTAL LOCKS 139 • ROUTE TIME 63 HOURS**

(Additional licence required for River Avon).
This route can be started from Worcester or Alvechurch Marina.
Visit www.abcboathire.com for more detailed information.

P2 N2 L15

STRATFORD-UPON-AVON & RETURN

**7 NIGHTS • CRUISING TIME PER DAY 6 HRS •
TOTAL LOCKS 44 • ROUTE TIME 45 HOURS**

(Avon Licence required from Tewkesbury)
(Not advisable for beginners)

Cruise through idyllic stretches of countryside to this historic town, which offers a superb mixture of culture, history and shopping. Moor in the beautifully maintained canal basin at Stratford, where you can visit the Royal Shakespeare Theatre and many other attractions. You will need to obtain a licence for the River Avon from Tewkesbury (see www.avonnavigationtrust.org for more details) and having a second route option is advisable as you will be travelling on the river.

P2 N2 L15

BIRMINGHAM & RETURN

**7 NIGHTS • CRUISING TIME PER DAY 6 HRS •
TOTAL LOCKS 108 • ROUTE TIME 39 HOURS**

This route will take you up the Worcester and Birmingham Canal, past the Droitwich Canal, through Hanbury Wharf, past Stoke Prior and onto the Tardebigge Flight of locks. The Tardebigge Locks is the longest flight in the UK comprising of 30 locks between Stoke Prior and Tardebigge Tunnel (length 580 yards).

P2 N2 L16

SHORT BREAKS

**WEEKENDS: FRIDAY-SUNDAY (2 NIGHTS)
WEEKENDS: FRIDAY-MONDAY (3 NIGHTS)
MIDWEEK: MONDAY-FRIDAY (4 NIGHTS)**

DROITWICH RING

**3 NIGHTS • CRUISING TIME PER
DAY 6 HRS • TOTAL LOCKS 33 •
ROUTE TIME 16 HOURS**

The Droitwich Canal links the Worcester and Birmingham with the River Severn at Hawford creating a mini-ring from Worcester. Cruising the ring will take approximately 16 hours so a short break is possible, but will require long days cruising on weekend breaks.

P2 N2 D1

STOKE PRIOR & RETURN

**3 NIGHTS • CRUISING TIME PER
DAY 6 HRS • TOTAL LOCKS 38 •
ROUTE TIME 16 HOURS**

Cruise up the Worcester and Birmingham Canal. This trip takes you north into rural Worcestershire where you pass through the very heart of 'Archers' country to the village of Stoke Prior.

P1 N2 L16

STOURTON JUNCTION & RETURN

**4 NIGHTS • CRUISING TIME PER
DAY 7 HRS • TOTAL LOCKS 41 •
ROUTE TIME 28 HOURS**

Cruise up the River Severn to the inland port of Stourport where you join the idyllic Staffordshire and Worcestershire Canal. Before returning to Worcester you will be able to enjoy seeing North Worcestershire at its best from this gently meandering canal.

P1 N2 L16

BOOK YOUR CANAL BOATING BREAK TODAY

CALL US ON 0330 333 0590 OR EMAIL [INFO@ABCBOATHIRE.COM](mailto:info@abcboathire.com) OR VISIT [WWW.ABCBOATHIRE.COM](http://www.abcboathire.com)

WRENBURY

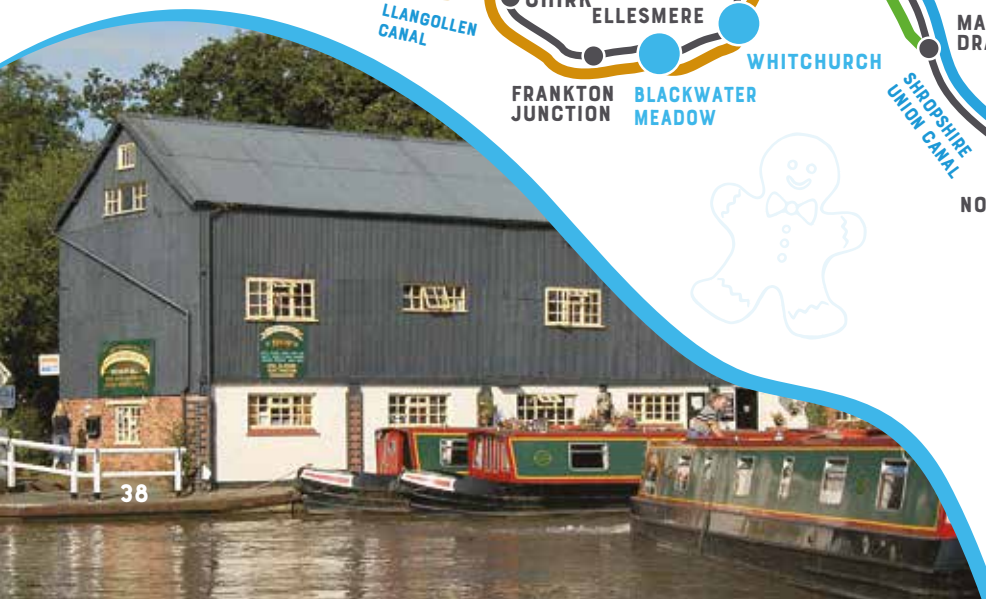
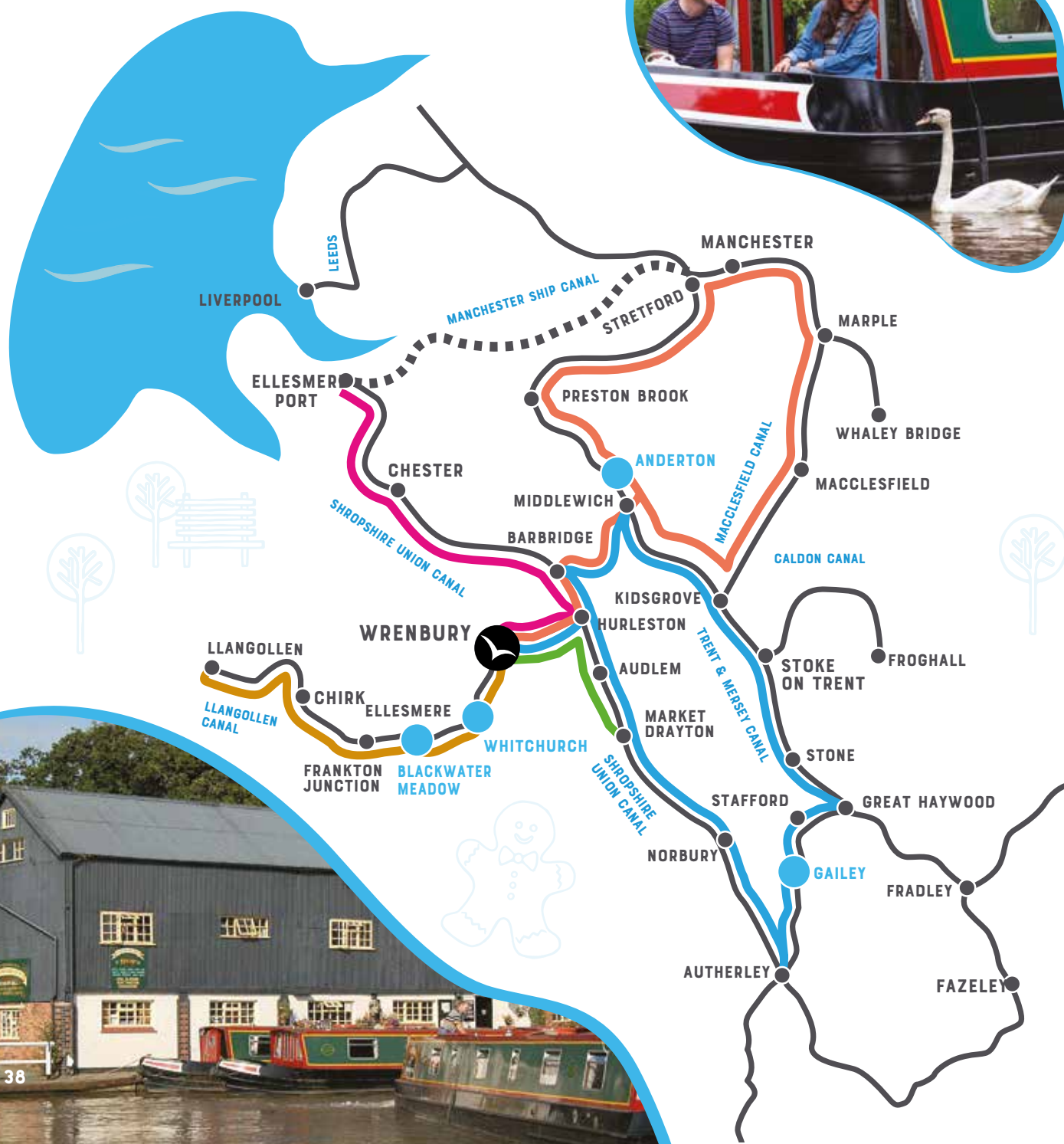
FOR PRETTY SCENERY AND STUNNING VIEWS, LITTLE COMPARES TO THE LLANGOLLEN CANAL, WITH SIGHTS THAT INCLUDE THE ELLESMERE 'MERES' AND THE PONTCYSYLLTE AQUEDUCT.

BERTHS AVAILABLE 2 - 10 (SEE BOAT LAYOUT PAGES)

WELSH BORDERS, CW5 8HG

TEL: 01270 780544

WWW.WRENBURYMILL.COM





LLANGOLLEN & RETURN

**7 NIGHTS • CRUISING TIME PER DAY 5½HRS •
TOTAL LOCKS 24 • ROUTE TIME 38 HOURS**

If you would like to travel to Llangollen, but were looking to complete more locks, then start from Wrenbury Marina rather than Whitchurch or Blackwater Meadow. The last locks before Llangollen are at New Marton, half way between Ellesmere and Chirk.

From there, the canal clings to the hillside, offering a blend of views, from aqueducts to tunnels. This route will take you lock-free through to Llangollen.

P3 N4 L8 H2

ELLESMERE PORT & RETURN

**7 NIGHTS • CRUISING TIME PER DAY 6½HRS •
TOTAL LOCKS 48 • ROUTE TIME 31 HOURS**

From Wrenbury you will travel up the Llangollen Canal to join the Shropshire Union Canal and travel up to the industrial town of Ellesmere Port. Why not visit the National Waterways Museum, which brings together a unique fleet of historic boats and archives to tell the story of Britain's waterways?

P3 N4 L8

HOLIDAY PROPERTY ALSO AVAILABLE AT THIS LOCATION PLEASE SEE:
WWW.ABCHOLIDAYCOTTAGES.COM

MARKET DRAYTON

**7 NIGHTS • CRUISING TIME PER DAY 5HRS •
TOTAL LOCKS 62 • ROUTE TIME 25 HOURS**

When you join the Shropshire Union Canal at Hurleston Junction head down the canal to Market Drayton. Did you know Market Drayton has been the home of gingerbread for the last 200 years? (Find out more at www.shropshiretourism.co.uk/market-drayton).

P3 N4 L8

THE CHESHIRE RING

**11-14 NIGHTS • CRUISING TIME PER DAY 6HRS •
TOTAL LOCKS 137 • ROUTE TIME 72 HOURS**

This route can be completed from Wrenbury Marina in 11 to 14 nights, depending on how relaxing you want the journey to be.

P3 P5 N4 N5 L5 L8

FOUR COUNTIES RING

**14 NIGHTS • CRUISING TIME PER DAY 6HRS •
TOTAL LOCKS 132 • ROUTE TIME 69 HOURS**

This ring can also be completed from Whitchurch and Blackwater Meadow from the Llangollen, or Gailey and Anderton Marina.

P3 P5 N4 L8

SHORT BREAKS

**WEEKENDS: FRIDAY-SUNDAY (2 NIGHTS)
WEEKENDS: FRIDAY-MONDAY (3 NIGHTS)
MIDWEEK: MONDAY-FRIDAY (4 NIGHTS)**

WHITCHURCH & RETURN

**3 NIGHTS • CRUISING TIME PER
DAY 4HRS • TOTAL LOCKS 20 •
ROUTE TIME 11 HOURS**

Travel between our Wrenbury and Whitchurch Marinas and explore Whitchurch before you return (www.shropshiretourism.co.uk/whitchurch).

P3 N4 L8 H2

ELLESMERE & RETURN

**3 NIGHTS • CRUISING TIME PER
DAY 8½HRS • TOTAL LOCKS 20 •
ROUTE TIME 22 HOURS**

The run into Ellesmere is through an area of outstanding beauty, with a series of Ice-Age lakes known as 'meres' very close to the canal.

P3 N4 L8 H2

CHIRK & RETURN

**4 NIGHTS • CRUISING TIME
PER DAY 6HRS • TOTAL LOCKS 24 •
ROUTE TIME 30 HOURS**

Towards the Welsh border at Chirk, the country's fine hills come into view and the scenery becomes altogether more dramatic.

P3 N4 L8 H2

BOOK YOUR CANAL BOATING BREAK TODAY

CALL US ON **0330 333 0590** OR EMAIL INFO@ABCBOATHIRE.COM OR VISIT WWW.ABCBOATHIRE.COM

A FLOATING HOLIDAY HOME

SO MUCH CHOICE. WE ARE SURE THAT, AMONGST THE FOLLOWING PAGES, YOU WILL FIND A BOAT THAT SUITS YOUR OWN INDIVIDUAL TASTE. WE BELIEVE THAT THERE ARE NO BETTER BOATS ON THE INLAND WATERWAYS AND WE HOPE THAT BY THE END OF YOUR HOLIDAY, YOU'LL AGREE WITH US TOO!



SALOON

During the day it is a sitting room, dining room and play area, complete with a TV (reception variable at canal level) DVD and CD/radio player - and at night most dinettes can be converted to a double bed.

STORAGE

You will find lockers and hanging space, we suggest that you bring soft foldable bags instead of hard suitcases.

THE GALLEY

Boating can give you a splendid appetite, so the galleys are fitted with a cooker and fridge.

TOILETS

Our boats come with very efficient and environmentally friendly, fresh water flushing toilets on all boats.

WATER

We provide double filtered drinking water on our boats. The 150 gallon tank will need to be topped up daily from waterpoints along the canal. (These are frequent and clearly marked.)

SHOWERS

Showers with hot water just like home.

BERTHS

All of our boats have comfortable beds. We provide freshly laundered duvets and bedding.

ENGINES

Reliable, quiet, smooth running diesel engines.

BEDDING & TOWELS

All bed linen is provided: sheets, pillows, pillow cases, pillow and mattress protectors, duvets and duvet covers. There is 1 medium towel per person and 1 hand towel per person on all boats.

FREE



(Subject to terms & conditions and network coverage)

STERN TYPES



CRUISER



SEMI-TRADITIONAL

" THE WHOLE EXPERIENCE WAS AMAZING! GREAT FUN, A FULLY EQUIPPED BOAT - COULD NOT FAULT A THING. "



GUIDE TO SYMBOLS

ALL OF OUR BOATS HAVE AT LEAST THE FOLLOWING EQUIPMENT PROVIDED FREE OF CHARGE:

- Central heating with radiators throughout the boat
- Fully equipped galley with a gas stove, grill and oven, refrigerator, sink and drainer, work surface and storage space
- Bedding
- Bathroom (2 full size bathrooms on our larger boats) with toilet, shower, hand basin and 240 volt shaver socket
- All boats have a TV (reception variable at canal level), CD and DVD players
- Quiet water-cooled engine
- Fresh water tank with double filter system for drinking water
- FREE WiFi (subject to terms & conditions and coverage)

STANDARD ITEMS AVAILABLE ON ALL BOATS:



ADDITIONAL ITEMS AVAILABLE ON SOME BOATS:



Bases	Fri/Mon	Sat
Alvechurch	✓	✓
Gailey		✓

The chart next to each boat description indicates the bases and start days for which boats in the class are available.



As part of our commitment to safety, all of our start bases have been independently audited by British Marine for the standard of boat handover and tuition.



All of our boats are inspected regularly and customer feedback is monitored to ensure our high quality standards are maintained.



All of our marinas are regularly inspected by the tourist boards for England, Scotland and Wales.

ELECTRICITY

All our boats have 12 volt electricity. The batteries charge whilst the engine is running to power items such as the fridge, TV, DVD, CD/ Radio, lights and a cigar lighter socket.

240 VOLT ELECTRICITY

This symbol indicates that the boat has an inverter that supplies 240v electricity to certain appliances on the boat. This is suitable for the electrical items supplied, but may damage your own equipment.

TOILETS

All of our boats are equipped with fresh water flush toilets which will, in most cases, last for a full week without need of pumping out (pump-outs are readily available at most boat yards for a small fee).

ELECTRIC TOILET

This symbol indicates the boat has the latest design of electrically operated macerator toilets, which are comparable to a domestic toilet in terms of size and appearance. Please note that

these are not suitable for the disposal of 'moist toilet wipes', quilted toilet paper or any other items which will block the system.

ALARMS

All our boats are equipped with carbon monoxide and smoke alarms.

COTS

If you are bringing your own travel cot, please check the website or call the marina. Space is obviously limited, and for health and safety reasons we can advise on suitable boats that they can be accommodated on.

COT SIDES

For toddlers and younger children, cot sides can be supplied to fit our bunks (where possible) - request when booking.

OPTIONAL BUNKS

Some classes of boat have an optional bunk bed, which provides greater layout flexibility. These

beds are operated by the boat yard who will either lock it away or set it up for use if you have requested it. There is a 10 stone weight limit for optional high level berths and they may not be used above a double bed.

BUOYANCY AIDS

There are buoyancy aids available free of charge for both children and adults at the marinas (compulsory for children under the age of 18 and non-swimmers). There are two adult buoyancy aids on board but any additional buoyancy aids should be requested on arrival. They do not need to be booked in advance and should be requested upon arrival at the marina so the correct size can be fitted.

TOWELS AND BEDDING

On all boats, a medium towel and a hand towel is provided for every member of the crew. Bedding is provided to suit the bed layout configuration requested.

INSIDE

OUR BOATS

All of our boats have been individually handmade in this country and have unique interiors with different styles.

For specific advice on boat layouts contact the marina



NB. Boats are individually handcrafted, so layouts may vary on different boats within each class from the diagram shown.

BOOK YOUR CANAL BOATING BREAK TODAY

CALL US ON **0330 333 0590** OR EMAIL **INFO@ABCBOATHIRE.COM** OR VISIT **WWW.ABCBOATHIRE.COM**

BOAT LAYOUTS

There are 29 different classes of boat, with a flexibility of design that allows a choice of berths to suit any group from 2 up to 12 people.

The majority of permanent cabins can be made up as either a double or two single berths - just tell us the layout you require and the boat will be set up in that configuration, with the appropriate bedding, for when you arrive. The symbols indicate its features (see key on page 40) and the box to the right of each boat shows the base and start days it operates.

FOR DETAILS OF BUNK DIMENSIONS
SEE [WWW.ABCBOATHIRE.COM](http://www.abcboathire.com)

Available for all boats...

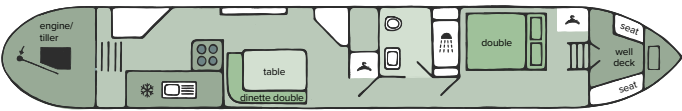


SLEEPS UP TO 4

2+2 BERTH • LENGTH 49FT. CRUISER STERN

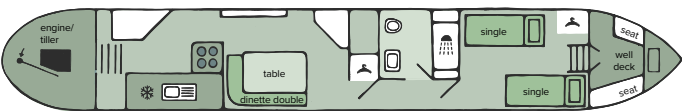
LAYOUT 1

One dinette/double berth and one double berth



LAYOUT 2

One dinette/double berth and two single berths



ALVECHURCH SWIFT

Bases	Fri/Mon	Tues	Sat	Sat/Tues
Alvechurch			✓	✓
Blackwater	✓			
Hilperton	✓			
Gailey Wharf	✓	✓	✓	
Whitchurch	✓		✓	
Springwood	✓		✓	
Gayton	✓			
Aldermaston	✓			
Wrenbury	✓			



ALVECHURCH GREBE

Bases	Fri/Mon	Sat
Springwood	✓	



SWIFT ADDITIONAL FEATURES:

- LED lighting throughout
- TV in bedroom and saloon
- Large mirror in the bathroom
- Shower with bi-fold door
- 4 speaker radio/CD
- Extractor in the bathroom
- Front deck table
- Wider beds

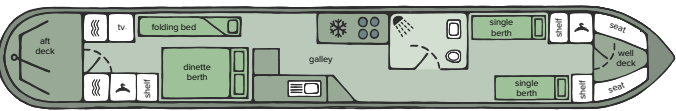


SLEEPS UP TO 4

2+2 BERTH • LENGTH 49FT. CRUISER STERN

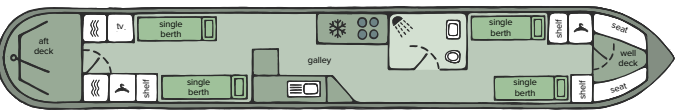
LAYOUT 1

One dinette double and two single berths



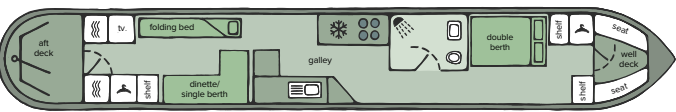
LAYOUT 2

Four single berths



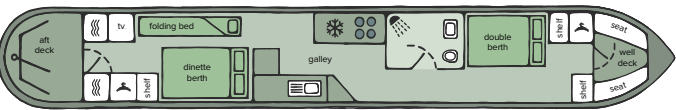
LAYOUT 3

Two dinette singles and one double berth



LAYOUT 4

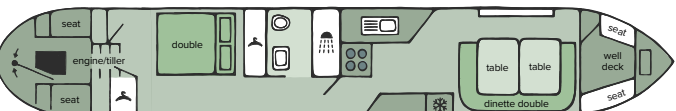
Two double berths



2+2 BERTH • LENGTH 49FT. SEMI-TRADITIONAL STERN

LAYOUT 1

One double berth and one dinette/double berth



LAYOUT 2

Two single berths and one dinette/double berth



BOOK YOUR CANAL BOATING BREAK TODAY
CALL US ON 0330 333 0590 OR EMAIL [INFO@ABCBOATHIRE.COM](mailto:info@abcboathire.com) OR VISIT [WWW.ABCBOATHIRE.COM](http://www.abcboathire.com)

ALVECHURCH KESTREL CLASS

Bases	Fri/Mon	Sat
Gailey	✓	



ALVECHURCH WEAVER

Bases	Fri/Mon	Sat
Aldermaston	✓	



ALVECHURCH WREN

Bases	Fri/Mon	Sat	Sat/Tues
Alvechurch	✓	✓	✓
Anderton	✓	✓	
Blackwater	✓		
Falkirk	✓	✓	
Gailey		✓	
Gayton	✓	✓	✓
Hilperton	✓	✓	✓
Kings Orchard	✓		
March	✓		
Nantwich	✓		
Springwood	✓	✓	
Whitchurch	✓	✓	
Wrenbury Mill	✓	✓	
Worcester	✓	✓	



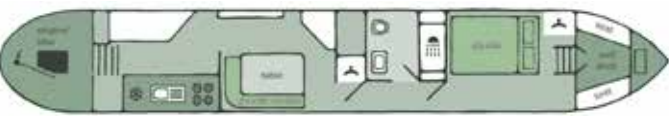
WREN ADDITIONAL FEATURES:

- LED lighting throughout
- TV in bedroom and saloon
- Large mirror in the bathroom
- Shower with bi-fold door
- 4 speaker radio/CD
- Extractor in the bathroom
- Front deck table
- Wider beds

SLEEPS UP TO 5

2+3 BERTH • LENGTH 49FT.
CRUISER STERN

LAYOUT 1
One double berth in forward cabin



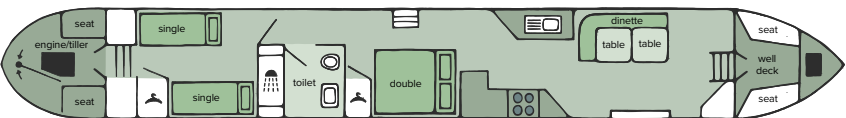
LAYOUT 2
Two low level single berths in forward cabin



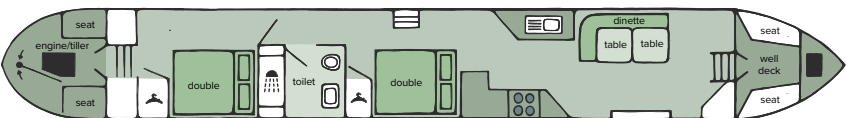
There is a 10 stone weight limit for optional high level berths and may not be used above a double bed.

4+1 BERTH • LENGTH 58FT.
SEMI-TRADITIONAL STERN

LAYOUT 1
Two single berths, one double and one dinette/single berth



LAYOUT 2
Two double berths and one dinette/single berth



PLOVER ADDITIONAL FEATURES:

- LED lighting throughout
- TV in a bedroom and saloon
- Large mirror in the bathroom
- Shower with bi-fold door
- 4 speaker radio/CD
- Extractor in the bathroom
- Front deck table
- Wider beds

ALVECHURCH FINCH

Bases	Fri/Mon	Sat
Goytre Wharf	✓	✓



ALVECHURCH BUNTING

Bases	Fri/Mon	Sat
Aldermaston		✓
Alvechurch	✓	



Optional high level single berth is available to provide 5th berth in forward cabin.

ALVECHURCH HERON

Bases	Fri/Mon	Sat	Sat/Tues
Anderton		✓	
Hilperton		✓	✓
Wrenbury	✓		



ALVECHURCH PLOVER

Bases	Fri/Mon	Sat	Sat/Tues
Alvechurch	✓		
Blackwater		✓	✓
Gayton		✓	
Hilperton	✓		
Kings Orchard			✓
Whitchurch		✓	
Wrenbury		✓	

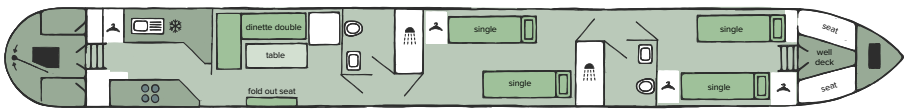


Stove only available on Heron class

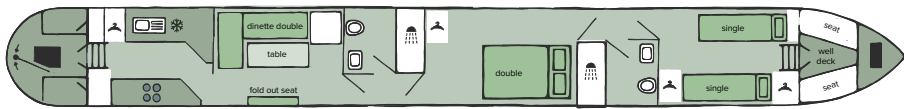
SLEEPS UP TO 6

4+2 BERTH • LENGTH 66FT.
SEMI-TRAD STERN

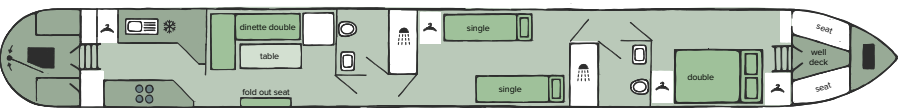
LAYOUT 1
Four single berths and one dinette double



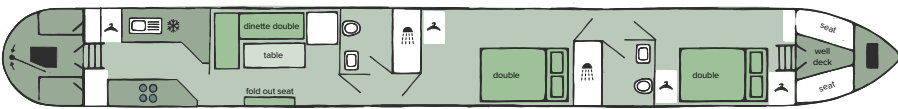
LAYOUT 2
Two single berths, one double berth and one dinette double



LAYOUT 3
Two single berths, one double berth and one dinette double



LAYOUT 4
Two double berths and one dinette double



ALVECHURCH PARTRIDGE

Bases	Fri/Mon	Sat/Tues
Alvechurch	✓	✓
Anderton	✓	
Blackwater	✓	
Hilperton		✓
Nantwich	✓	
Whitchurch	✓	
Wrenbury	✓	



ADDITIONAL FEATURES:

- LED lighting throughout
- TV in a bedroom and saloon
- Large mirror in the bathroom
- Shower with bi-fold door
- 4 speaker radio/CD
- Extractor in the bathroom
- Front deck table
- Wider beds

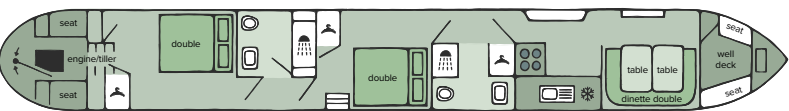


SLEEPS UP TO 6

4+2 BERTH • LENGTH 66FT. SEMI-TRADITIONAL STERN

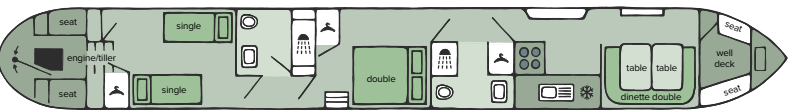
LAYOUT 1

Two double berths and one dinette/double berth



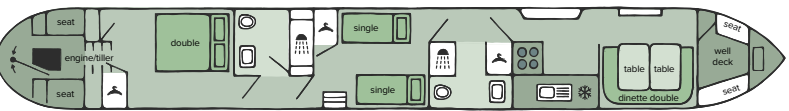
LAYOUT 2

Two single berths, one double berth and one dinette/double berth



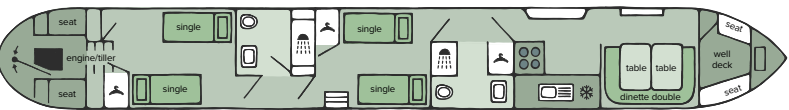
LAYOUT 3

One double berth, two single berths and one dinette/double berth



LAYOUT 4

Four single berths and one dinette/double berth



ALVECHURCH THRU

Bases	Fri/Mon	Sat/Tues
Aldermaston	✓	
Blackwater		✓
Gayton	✓	
Hilpertown	✓	



ALVECHURCH LARK

Bases	Fri/Mon	Sat	Sat/Tues
Aldermaston	✓	✓	
Alvechurch	✓	✓	✓
Anderton	✓		✓
Blackwater	✓		
Falkirk	✓	✓	
Gayton			✓
Hilpertown	✓	✓	✓
Kings Orchard	✓		
Nantwich	✓		
Springwood	✓		
Whitchurch	✓	✓	
Worcester	✓	✓	
Wrenbury	✓	✓	



Please Note: The Alvechurch Lark at Falkirk is 63ft in length.

LARK ADDITIONAL FEATURES:

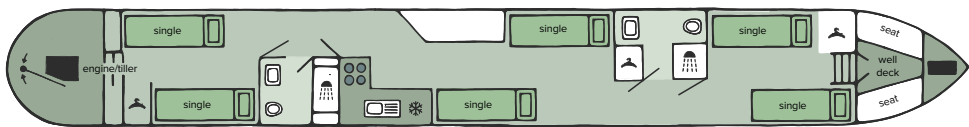
- LED lighting throughout
- TV in a bedroom and saloon
- Large mirror in the bathroom
- Shower with bi-fold door
- 4 speaker radio/CD
- Extractor in the bathroom
- Front deck table
- Wider beds

SLEEPS UP TO 6

4+2 BERTH • LENGTH 60FT. CRUISER STERN

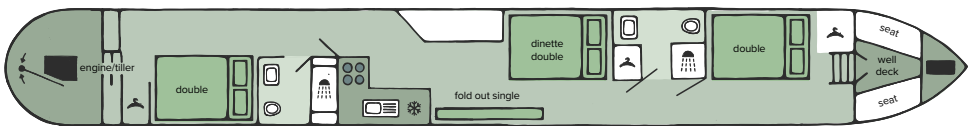
LAYOUT 1

Four single berths and one dinette/two single berths



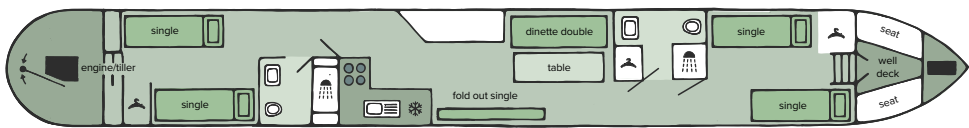
LAYOUT 2

Two double berths and one dinette/double berth



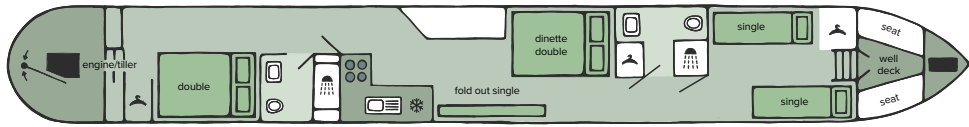
LAYOUT 3

Four single berths and one dinette/double berth



LAYOUT 4

One double berth, one dinette/double berth and two single berths

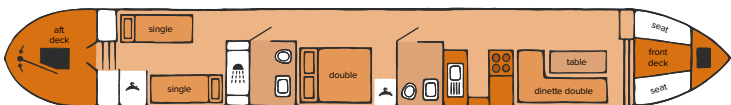


*Gailey Ducks may not be configured as 6 singles. The middle cabin can only be a double or one single. The forward shower on the Gailey Duck has a curtain not a glass screen.

4+2 BERTH • LENGTH 57FT. CRUISER STERN

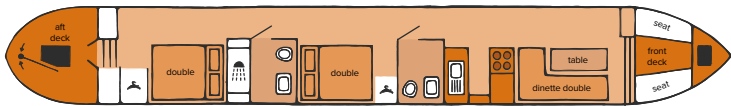
LAYOUT 1

Two single berths, one double berth and one dinette/double berth



LAYOUT 2

Two double berths and one dinette/double berth



BOOK YOUR CANAL BOATING BREAK TODAY

CALL US ON 0330 333 0590 OR EMAIL [INFO@ABCBOATHIRE.COM](mailto:info@abcboathire.com) OR VISIT [WWW.ABCBOATHIRE.COM](http://www.abcboathire.com)

ALVECHURCH DOVE

Bases	Fri/Mon	Sat
Aldermaston	✓	
Worcester		✓



Ideal for two couples as a luxury boat with separate cabins and bathrooms and easy access to saloon and galley.

ALVECHURCH DUCK*

Bases	Fri/Mon	Sat	Sat/Tues
Gailey	✓	✓	✓
March	✓		
Nantwich	✓		
Springwood		✓	
Whitchurch	✓		
Worcester	✓		



Ideal for two couples as a luxury boat with separate cabins and bathrooms and easy access to saloon and galley.

DUCK ADDITIONAL FEATURES:

- LED lighting throughout
- TV in a bedroom and saloon
- Large mirror in the bathroom
- Shower with bi-fold door
- 4 speaker radio/CD
- Extractor in the bathroom
- Front deck table
- Wider beds

FALKIRK SPIRIT

Bases	Sat/Wed
Falkirk	✓



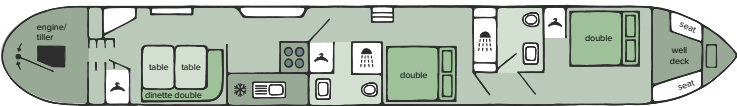
SLEEPS UP TO 6

4+2 BERTH • LENGTH 66FT.
CRUISER STERN • GULL
4+2 BERTH • LENGTH 66FT*.
CRUISER STERN • SANDPIPER

*Sandpiper at Falkirk is 63ft

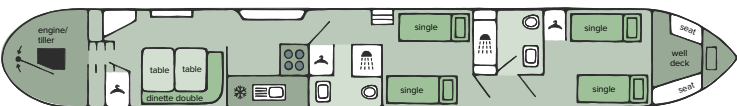
LAYOUT 1

One dinette/double berth and two double berths



LAYOUT 2

One dinette/double berth and four single berths



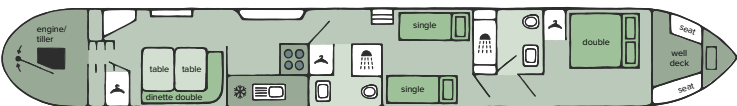
LAYOUT 3

One dinette/double, one double berth and two single berths



LAYOUT 4

One dinette/double berth, two single berths and one double berth



ALVECHURCH GULL

Bases	Fri/Mon	Sat
Anderton	✓	
Gailey	✓	
Springwood	✓	
Wrenbury		✓



ALVECHURCH SANDPIPER

Bases	Fri/Mon	Sat	Sat/Tues
Alvechurch	✓	✓	✓
Anderton		✓	
Falkirk	✓		
Gailey	✓		
Gayton	✓		✓
Hilberton	✓	✓	✓
Whitchurch		✓	
Worcester	✓		
Wrenbury		✓	



SANDPIPER ADDITIONAL FEATURES:

- LED lighting throughout
- TV in a bedroom and saloon
- Large mirror in the bathroom
- Shower with bi-fold door
- 4 speaker radio/CD
- Extractor in the bathroom
- Front deck table
- Wider beds

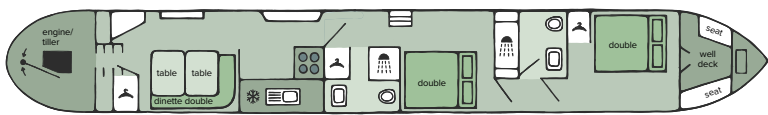


SLEEPS UP TO 7

4+3 BERTH • LENGTH 66FT. CRUISER STERN

LAYOUT 1

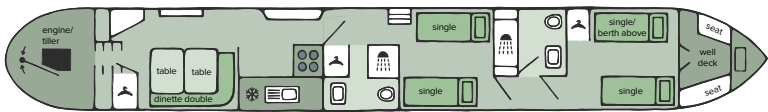
One dinette/double berth and two double berths



There is a 10 stone weight limit for optional high level berths and may not be used above a double bed.

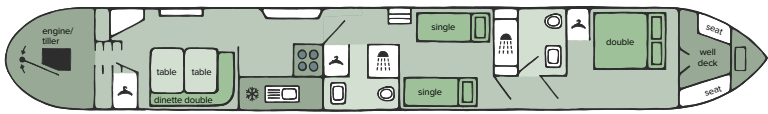
LAYOUT 2

One dinette/double berth and four single berths



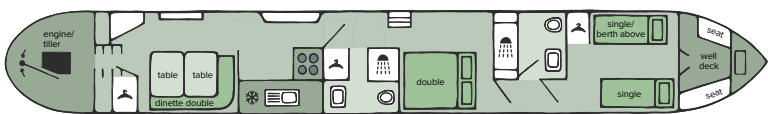
LAYOUT 3

One dinette/double berth, two single berths and one double berth



LAYOUT 4

One dinette/double berth, one double berth and two single berths



ALVECHURCH EAGLE

Bases	Fri/Mon	Sat
Aldermaston	✓	
Whitchurch	✓	



Two low level single berths or a double berth available in middle and forward cabins.

Optional high level single berth available to provide 7th berth in forward cabin.

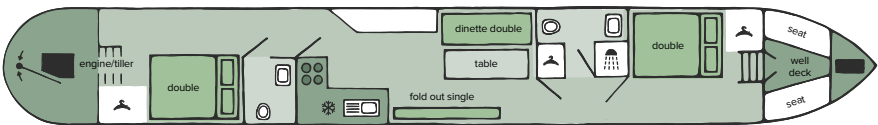


SLEEPS UP TO 8

4+4 BERTH • LENGTH 56FT. CRUISER STERN

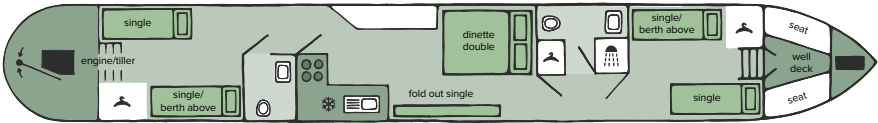
LAYOUT 1

Two double berths and one dinette/double berth



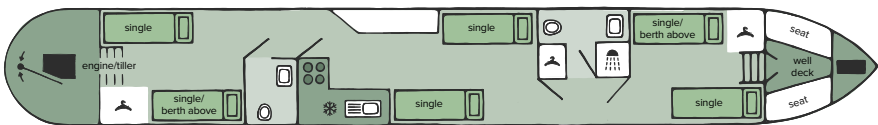
LAYOUT 2

Four single berths and one dinette/double berth



LAYOUT 3

Six single berths



ALVECHURCH SWALLOW

Bases	Fri/Mon	Sat
Goytre Wharf	✓	✓



Two low level single berths
or a double berth available
in all cabins.

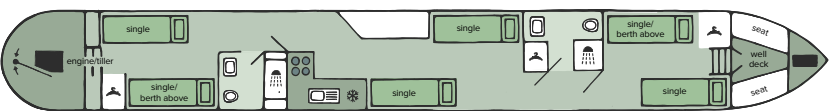
Optional high level single berths
available to provide 7th and 8th
berths in forward and rear cabins.

There is a 10 stone weight limit for
optional high level berths and may
not be used above a double bed.

4+4 BERTH • LENGTH 60FT. CRUISER STERN

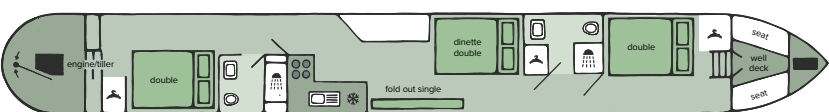
LAYOUT 1

Six single berths



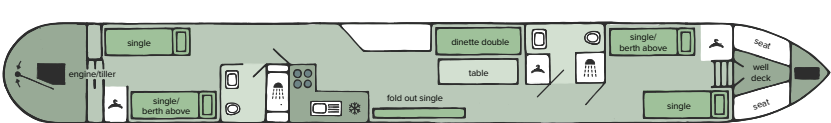
LAYOUT 2

Two double berths and one dinette/double berth



LAYOUT 3

Four single berths and one dinette/double berth



ALVECHURCH WOODPECKER

Bases	Fri/Mon	Sat
Aldermaston	✓	✓
Wrenbury	✓	



Separate cabins and bathrooms and easy
access to saloon and galley.

Two low level single berths
or a double berth available
in all cabins.

Optional high level single berths
available to provide 7th and 8th
berths in forward and rear cabins.

There is a 10 stone weight limit for
optional high level berths and may
not be used above a double bed.

SLEEPS UP TO 8

6+2 BERTH • LENGTH 69FT. SEMI-TRADITIONAL STERN

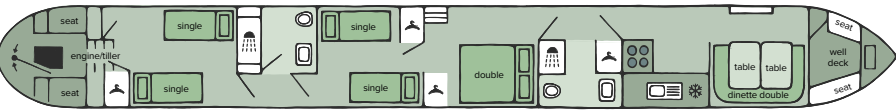
LAYOUT 1

Three doubles and one dinette/double berth



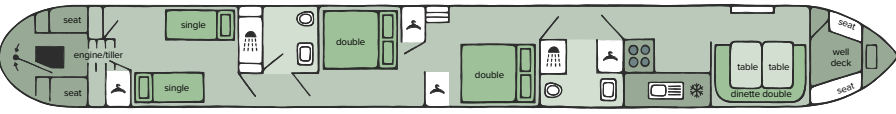
LAYOUT 2

Four single berths, one double berth and one dinette/double berth



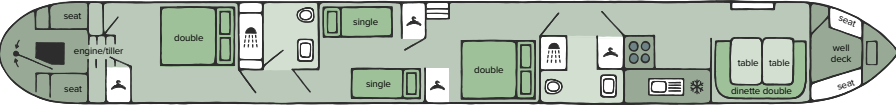
LAYOUT 3

Two single berths, two double berths and one dinette/double berth



LAYOUT 4

Two double berths, two single berths and one dinette/double berth

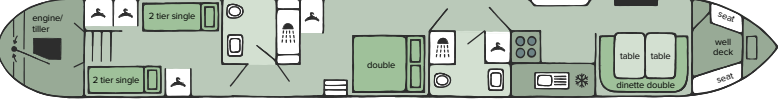


*Gailey Goose can be set up to accommodate 6 singles and the galley layout is U shaped allowing for a slightly larger saloon.

6+2 BERTH • LENGTH 63FT. CRUISER STERN • MIST

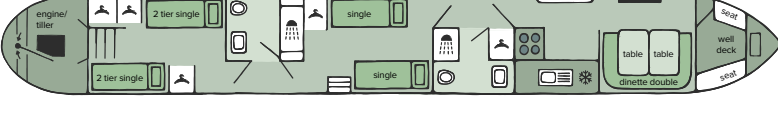
LAYOUT 1

One dinette/double berth, one double berth and 4 single bunks



LAYOUT 2

Four single bunks, two single berths and one dinette/double berth



BOOK YOUR CANAL BOATING BREAK TODAY

CALL US ON 0330 333 0590 OR EMAIL INFO@ABCBOATHIRE.COM OR VISIT WWW.ABCBOATHIRE.COM

ALVECHURCH GOOSE*

Bases	Fri/Mon	Sat/Tues
Hilpertown	✓	✓



ALVECHURCH WARBLER

Bases	Fri/Mon	Sat	Sat/Tues
Aldermaston	✓	✓	
Alvechurch	✓	✓	✓
Anderton	✓	✓	
Blackwater	✓		✓
Gailey	✓	✓	
Gayton	✓		✓
Hilpertown	✓		
Kings Orchard	✓		
Nantwich	✓		
Springwood	✓		
Whitchurch	✓	✓	
Worcester	✓	✓	
Wrenbury	✓	✓	



WARBLER ADDITIONAL FEATURES:

- LED lighting throughout
- TV in a bedroom and saloon
- Large mirror in the bathroom
- Shower with bi-fold door
- 4 speaker radio/CD
- Extractor in the bathroom
- Front deck table
- Wider beds

FALKIRK MIST

Bases	Sat/Wed
Falkirk	✓

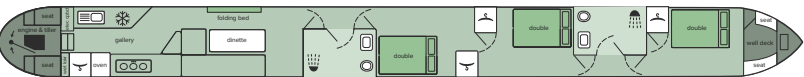


SLEEPS UP TO 8

6+2 BERTH • LENGTH 69FT. CRUISER STERN • FALCON

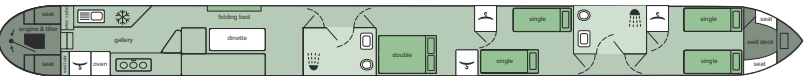
LAYOUT 1

Three doubles and one dinette/double berth



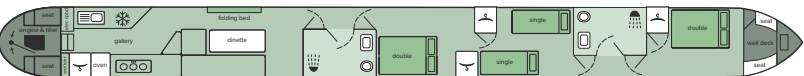
LAYOUT 2

Four single berths, one double berth and one dinette/double berth



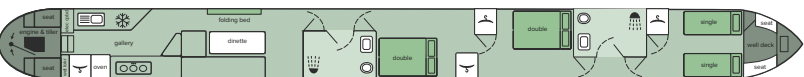
LAYOUT 3

Two single berths, two double berths and one dinette/double berth



LAYOUT 4

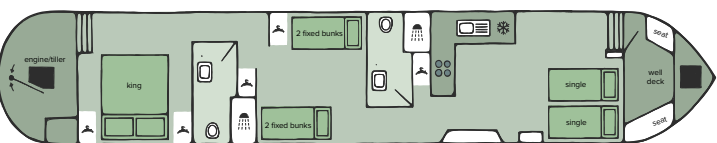
Two double berths, two single berths and one dinette/double berth



6+2 BERTH • LENGTH 60FT. CRUISER STERN

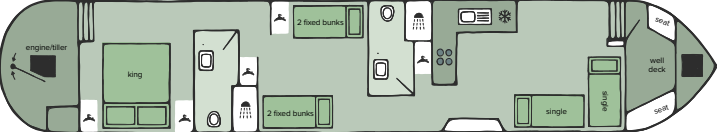
LAYOUT 1

One king size bed, four single bunks and one dinette/double berth



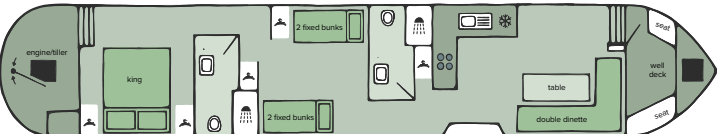
LAYOUT 2

One king size bed, four single bunks and one dinette/two single berths



LAYOUT 3

One king size bed, four single bunks and one dinette



ALVECHURCH FALCON

Bases	Sat/Tues
Gayton	✓



FALCON ADDITIONAL FEATURES:

- LED lighting throughout
- TV in a bedroom and saloon
- Large mirror in the bathroom
- Shower with bi-fold door
- 4 speaker radio/CD
- Extractor in the bathroom
- Front deck table
- Wider beds

ALVECHURCH SANDERLING

Bases	Fri/Mon
Falkirk	✓



WIDE BEAM BOAT



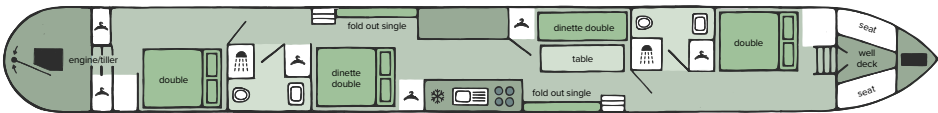
Please Note: The fuel consumption on this boat will be more than the suggested fuel deposits due to its size.

SLEEPS UP TO 10

6+4 BERTH • LENGTH 70FT. CRUISER STERN

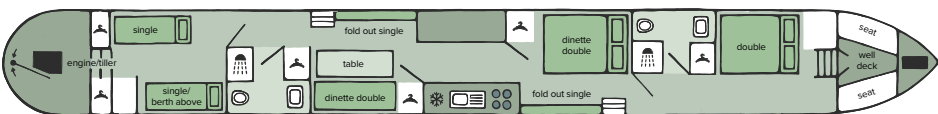
LAYOUT 1

Two double berths and two dinette/doubles



LAYOUT 2

Two single berths, one double berth, and two dinette/double berths



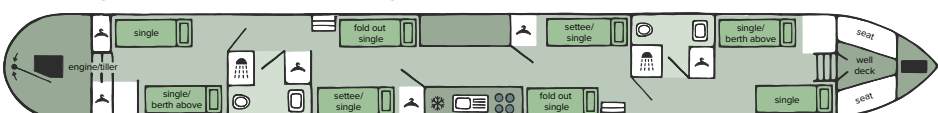
LAYOUT 3

One double berth, two single berths and one dinette/single berth and one dinette/double berth



LAYOUT 4

Four single berths and two dinette/single berths



LAYOUT 1

One double berth and two dinette/doubles with 4 single berths



LAYOUT 2

One double berth and two dinette/doubles with 4 single berths



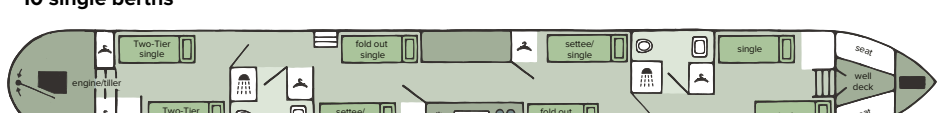
LAYOUT 3

One dinette/double with 8 single berths



LAYOUT 4

10 single berths



56

BOOK YOUR CANAL BOATING BREAK TODAY

CALL US ON 0330 333 0590 OR EMAIL INFO@ABCBOATHIRE.COM OR VISIT WWW.ABCBOATHIRE.COM

ALVECHURCH OWL

Bases	Fri/Mon
Blackwater	✓



Two low level single berths or a double berth available in all cabins.

Optional high level single berths available to provide 9th and 10th berths in forward and rear cabins.

There is a 10 stone weight limit for optional high level berths and may not be used above a double bed.

ALVECHURCH WAGTAIL

Bases	Fri/Mon	Sat
Hilpertown	✓	
Whitchurch	✓	
Worcester	✓	
Gayton	✓	



ALVECHURCH TERN

Bases	Fri/Mon
Aldermaston	✓
Alvechurch	✓
Anderton	✓
Wrenbury	✓



The Tern class has two fixed high level bunks in the rear cabin with the rest being low level berths throughout.

WAGTAIL/TERN ADDITIONAL FEATURES:

- LED lighting throughout
- TV in a bedroom and saloon
- Large mirror in the bathroom
- Shower with bi-fold door
- 4 speaker radio/CD
- Extractor in the bathroom
- Front deck table
- Wider beds

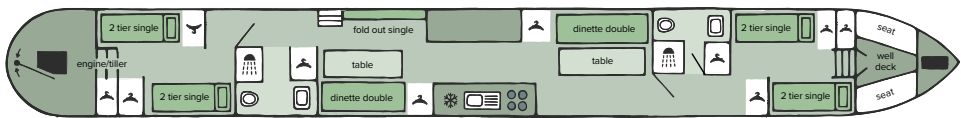
55

SLEEPS UP TO 12

8+4 BERTH • LENGTH 70FT.
CRUISER STERN

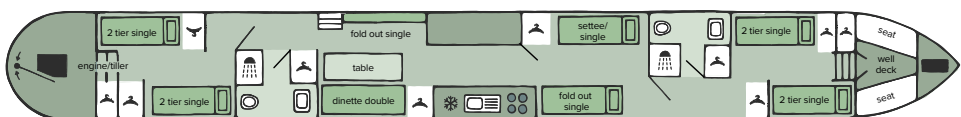
LAYOUT 1

Eight single bunks and two dinette/double berths



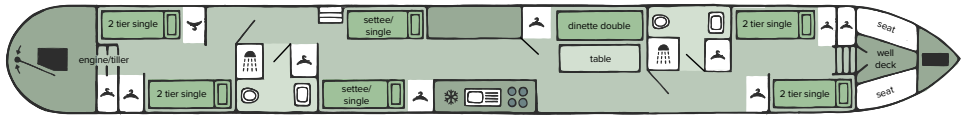
LAYOUT 2

Eight single bunks, one dinette/double berth and one dinette/two single berths



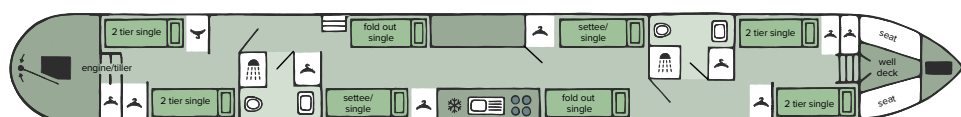
LAYOUT 3

Eight single bunks, one dinette/two single berths and one dinette/double berth



LAYOUT 4

Eight single bunks and two dinette/two single berths



ALVECHURCH SWAN

Bases	Fri/Mon
Aldermaston	✓
Alvechurch	✓
Anderton	✓
Blackwater	✓
Hilperton	✓



ABC APP

OUR APP HAS BEEN DESIGNED SO THAT YOU CAN HAVE ACCESS TO ALL YOUR HOLIDAY INFORMATION ON YOUR MOBILE DEVICE, EVEN WITHOUT HAVING A DATA SIGNAL.

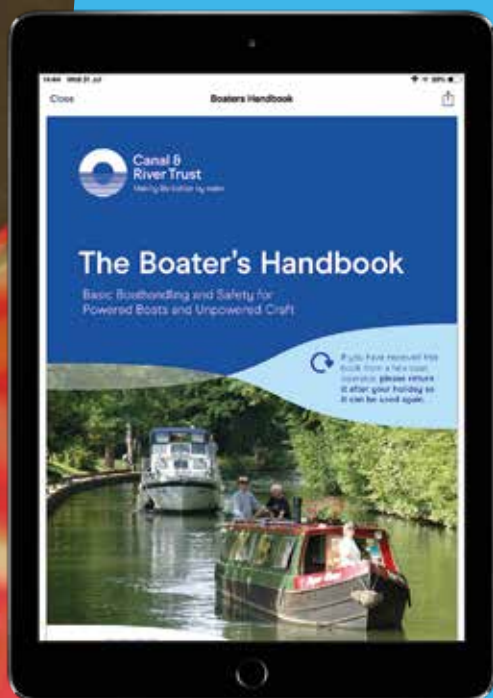


DOWNLOAD TODAY FOR FREE

YOU WILL FIND THE BOATERS HANDBOOK, DESTINATION INFORMATION AND EVEN MAPPING AND WEATHER FORECASTS ON YOUR MOBILE OR TABLET - AND YOU CAN VIEW EVERYTHING OFFLINE, WITHOUT THE EXPENSE OF DATA ROAMING.

Simply download the app from the Apple or Google Play Store and then enter the details we send you. Simply tick the option on the booking form so that we can create this for you.

You can then view your personalised app and it shows how long until your adventure starts with a handy countdown, a map with highlighted local attractions you'll find along your route, videos such as The Boaters Handbook DVD and our own video showing you what it's like being on a canal boat holiday with ABC and some various other bits of useful information for your holiday that you can access whenever you want and from wherever you are.



YOUR QUESTIONS ANSWERED



ARRIVAL & DEPARTURE



We endeavour to have boats ready for collection by 2.30pm on the start day of your holiday. If for any reason you are unable to arrive on time, please contact the start base (telephone numbers can be found at the bottom of the relevant base page) so that special arrangements can be made well in advance of your holiday. A late arrival charge may apply and we may be unable to handover the boat until the following day. Your boat must be returned and vacated by 9.30am on the last day.

ENVIRONMENT



There is a voluntary environmental offset donation suggested at £5 per holiday. We have an arrangement with the Canal & River Trust for you to offset your carbon footprint. Recycling is available at all bases.

BEDDING



On all our boats, freshly laundered bedding is provided for the number of crew.

BIKES & PADDLEBOARDS



If you are planning to bring bikes or paddleboards on your holiday, please check with the marina as not all locations are able to offer this facility. Please be aware that the only place to store them is on the roof of your boat. You cannot place the bikes inside the boat at any time. Any cost of damage to the boat caused by carrying bikes is your responsibility. Please note you cannot take these to Goytre Wharf and March. Please remember that you need a licence for your paddleboard on the canal.

FISHING



Fishing is prohibited on British rivers between 15th March and 15th June. Fishing is allowed outside these dates and on canals at any time, but an Environment Agency rod licence is required available online or from any post office, with a 1-day, 8-day or annual licence to choose from. You may also need a valid permit or be prepared to purchase one from the controlling angling club or riparian owner when approached on any fishery that offers day permits. For reasons of hygiene, we regret that live bait may not be kept on the boat.

PERSONAL HOLIDAY INSURANCE



We recommend that you take out personal holiday insurance as we only insure the boat which does not cover you or your personal possessions.

CANCELLING A BOOKING



We would like to draw your attention to our cancellation procedure and strongly recommend that you take out your own cancellation insurance. Once your holiday is confirmed, the appropriate payment is required - even if you have to cancel. (See Terms and Conditions).

FUEL



The boat is ready fuelled for your holiday on arrival, but there is a fuel deposit payable with your holiday booking. This is £110 per week and £60 per short break as the cost of fuel is not included in the hire cost. When you return the boat to us the balance is refundable after deducting fuel used. However if you have used fuel in excess of the deposit you will be asked to pay the difference. We feel this is the fairest way possible as you only pay for what you use and there is an incentive to be more environmentally friendly.

BUOYANCY AIDS



There are buoyancy aids available free of charge for both children and adults at the marinas (compulsory for children under the age of 18 and non-swimmers). There are two adult buoyancy aids on board but any additional buoyancy aids should be requested on arrival. They do not need to be booked in advance and should be requested upon arrival at the marina so the correct size can be fitted.

TUITION



No previous experience is necessary, as our boats are extremely easy to handle and full tuition is given at the start of every holiday. Comprehensive cruising information is in a manual on the boat and details are sent out with the holiday documents to introduce you to the theory of locks and the 'rules of the road'. We provide our own 24hr emergency helpline.



"WE HAD A BRILLIANT TRIP AND THE BOAT WAS WELL EQUIPPED AND MODERN. WE HOPE TO BOOK THIS BOAT AGAIN NEXT YEAR FOR A LONGER PERIOD! THANKS ABC."

TOWELS

On all boats, a medium sized towel and hand towel is provided for every member of the crew.



YOUNG CHILDREN

A narrowboat holiday is superb for families. Cot-sides can be provided for very small children on standard berths. Simply indicate this when booking. Cots: If you would like to bring a travel cot please see page 40.



LOOK BEFORE YOU BOOK

We welcome inspection of our boats before you book. Please phone the base before you arrive to ensure they are open and boats are available for viewing (telephone numbers can be found at the bottom of the relevant base page).



MAPS & GUIDES

A number of guides are available for planning your trip or locating sites of interest, pubs, shops and facilities along your route. The guides relevant to each route are indicated on the feature routes. These may be purchased online at www.chanderydirect.com or purchased at the start of the holiday at the marina.



LICENCES & RESTRICTIONS

You do not need a driving licence for a narrowboat and the boat itself is licenced by us for CRT waterways. There are a few waterways outside their jurisdiction for which you will need to purchase an additional licence as you enter them, such as the Scottish Canals, Rivers Avon, Thames and Wey. Aldermaston boats have a Thames licence. Our start bases can provide details when you arrive to pick up your boat. The maximum number of people on board is restricted to the number of berths.



ELECTRICAL EQUIPMENT

All personal electrical equipment is used at your own risk. 240v supply is dependent on battery level, which is charged by running the engine 5-6 hours daily.



PETS

This really is a holiday the whole family can enjoy together. Pets (including working assistant dogs) travel for free, normally with a maximum of 3 pets per boat. We obviously request that the boat is returned in a clean and tidy condition, and we reserve the right to refuse pets or charge for any additional cleaning or repairs required as a result of pets being on board during your holiday. All pets must be entered onto the booking form.



PARKING

There is ample open air parking at our bases which is provided free of charge. We regret that we cannot accept responsibility for loss or damage to hirers' vehicles or possessions.



MORE THAN JUST CANAL BOAT HOLIDAYS

FOR THAT PERFECT GETAWAY, DISCOVER MORE THAN JUST CANAL BOAT HOLIDAYS. ABC OFFERS DAY BOATS, CARAVAN PARKS, COTTAGES AND MUCH MORE. WE KNOW WE'VE GOT SOMETHING FOR EVERYONE.

WWW.ABCLG.COM

DAY BOAT HIRE

EXPLORE THE SECRET WATERWAYS OF BRITAIN ON ONE OF OUR SELF-DRIVE DAY BOAT HIRE NARROWBOATS. PERFECT TO TRY AS A TASTER DAY.

Plenty of start points across the waterway network and boat sizes to accommodate up to 12 people, you and your family or friends can afford to kick back and relax for the day as you enjoy watching Britain's stunning countryside drift by.

WWW.ABCDAYBOATHIRE.COM

CARAVAN PARKS

Escape to a pitch by the water at one of our Caravan Parks across the country in your campervan, caravan or motorhome.

WWW.ABCCARAVANPARKS.COM

BOAT SALES

Are you looking to buy your own boat? We offer a variety of private boats for sale on our brokerage service and also sell a number of ex-hire fleet boats every year.

WWW.ABCBOATSALES.COM





LOVELY PLACE TO STAY, CHOSE THIS ACCOMMODATION FOR A LONG WEEKEND, WE COULD EASILY HAVE FOUND THINGS TO DO FOR A LONGER STAY. LOVELY APARTMENT, GREAT LOCATION BY THE CANAL AND PUB IMMEDIATELY ACROSS THE CANAL.

- Holiday Cottages
- Day Boat Hire
- Boat Sales
- Boat Builders
- Marina Services
- Boat Maintenance
- Boat Repairs
- Chandlery
- Moorings
- Caravan Parks

AQUEDUCT COTTAGE

This is a cosy two bedroom cottage set in the historic and beautiful Goytre Wharf adjacent to the Monmouthshire & Brecon Canal and within the Brecon Beacon National Park. Easy access to the Brecon Beacons, Black Mountains and Usk Valley. You can access the canal towpath to walk or cycle just behind the cottage.

MILL END & THE GRAIN STORE

Two stylish two bedroom apartments located in the lovely Cheshire countryside. The holiday apartments are on the first floor of the Wrenbury Mill building, with beautiful views of the canal and passing boats. There are two traditional country pubs in the village.

BLACKWATER MEADOWS

A 3 bedroom apartment set in the beautiful Shropshire countryside on the outskirts of Ellesmere. It is within Blackwater Meadow Marina and adjacent to the Llangollen Canal. It is within walking distance of four beautiful and tranquil meres and a number of other attractions.

HAY BARN & BIKE SHED

The Hay Barn is a lovingly restored cottage that sleeps four people, maintaining period features and its rich history. The Bike Shed can sleep up to 10 people. Set in a peaceful location within the marina, with wonderful views over the Peak District.

HERONS LODGE

This three-bedroom property at Goytre Wharf is a peaceful retreat nestled close to the Monmouthshire and Brecon Canal. Surrounded by woodland and water, it offers stunning views, abundant wildlife, and direct access to scenic walking and cycling trails. Ideal for nature lovers, it's a perfect gateway to the Welsh countryside.

ABOVE THE PUB

True to its name, Above The Pub is a characterful, single-storey first-floor apartment set just above the award-winning Weighbridge Inn, right in the heart of Alvechurch Marina. Offering a unique stay for up to six guests, with the Worcester and Birmingham Canal just moments away.

QUAYSIDE APARTMENT

Quayside Apartment at Nantwich Canal Basin is a charming two-bedroom apartment located along the town's historic canal. Featuring period details and waterside views, it provides a peaceful retreat just minutes from Nantwich's shops, cafes, and attractions.

CANAL BASIN COTTAGE

The two bedroom property within Nantwich Canal Basin is a charming historic building that reflects the town's rich canal heritage. Located at the heart of the Shropshire Union Canal and within walking distance of the town centre.

WWW.ABCHOLIDAYCOTTAGES.COM

BOOK YOUR CANAL BOATING BREAK TODAY

CALL US ON 0330 333 0590 OR EMAIL INFO@ABCBOATHIRE.COM OR VISIT WWW.ABCBOATHIRE.COM

HIRE PRICE

Ready to set sail? Our prices are tailored to your stay, simply visit our website and choose your getaway dates and how many people will be travelling with you. Our website will provide a specialised quote in seconds. Don't forget you can also query pricing by calling our friendly team, who will be happy to help.

Prices vary depending on time of year, number of occupants and discount codes. With almost 200 boats, 16 start points and over 1,500 miles of waterways to explore, we guarantee we'll have the perfect holiday for you.

VISIT WWW.ABCBOATHIRE.COM
OR CALL OUR FRIENDLY TEAM ON 0330 333 0590



WEEKLY HIRE

PRICES ARE IN £s PER BOAT, PER WEEK OR SHORT BREAK.

THE PRICE IS INCLUSIVE OF:

- VAT
- Accidental Damage Waiver Fee
- Car parking
- Bed linen
- Buoyancy aids
- Wi-Fi
- Welcome pack: washing up liquid, toilet roll, sponge, tea towel
- Pets travel for free (max 2 per boat)
- Boat licence for all Canal & River Trust controlled navigations
- There is 1 medium towel per person and 1 hand towel per person on all boats
- Useful e-handbook in advance of holiday and initial tuition on arrival

PRICING:

- For pricing, simply visit our website or call up our friendly team on 0330 333 0590.

IN ADDITION TO THE HIRE CHARGE YOU WILL BE REQUIRED TO PAY:

- Pets travel for free, normally with a maximum of 3 pets per boat. All pets must be noted on booking form.
- The boat is ready fuelled for your holiday on arrival, but there is a fuel deposit payable with your holiday booking. This is £110 per week as the cost of fuel is not included in the hire cost. When you return the boat to us, the balance is refundable after deducting fuel used. However, if you have used fuel in excess of the deposit, you will be asked to pay the difference. We feel this is the fairest way possible as you only pay for what you use.

DISCOUNTS

Discounts are available to those booking longer holidays or more than one holiday in the year. These discounts may not be used in conjunction with any other offer vouchers or tokens - only the loyalty scheme. 35% is the maximum discount that can be claimed when discounts are combined.

25% 2 WEEK DISCOUNT

Off the basic hire price for holidays of two weeks or longer.

20% SECOND HOLIDAY DISCOUNT

If you book a further holiday in 2026 you will receive a 15% discount off the second holiday basic hire price.

The loyalty scheme is rewarded to customers based on the number of times you have booked with us.

1 HOLIDAY	5.0% DISCOUNT
2 HOLIDAYS	7.5% DISCOUNT
3 HOLIDAYS	10% DISCOUNT
4 HOLIDAYS	12% DISCOUNT

SHORT BREAKS

Every year sees an increase in the demand for these popular short breaks. Some people like the idea of being able to try the holiday out for a few days before committing themselves to a week or longer, whilst others regularly take the opportunity to get away for a few days. Narrowboat holidays are the fastest way of slowing down, so what could be better than a leisurely two, three or four night break away, enjoying the countryside, relaxing and unwinding.

Because we have boats available for Friday, Saturday, Monday and Tuesday starts we can offer superb two or three night weekend breaks that conveniently start at 2.30pm on a Friday afternoon and finish at 9.30am on the following Monday. Or if you are looking for extra value for money, you could try our four night midweek breaks. These start on Monday at 2.30pm and finish on Friday at 9.30am, or start on Tuesday at 2.30pm and finish on Saturday at 9.30am. Since the price is the same as a weekend break, you effectively get the extra midweek night free! This can be an additional bonus to those of you that are committed to weekend activities, as you can enjoy a decent break away without losing a weekend. Short breaks are available from all of our bases and sample trips.

WHAT'S INCLUDED

IN THE HIRE PRICE 2026



ACCIDENTAL DAMAGE WAIVER

The Accidental Damage Waiver Fee covers you in the event of damage, loss or accident to your boat or its inventory during your holiday. There are certain exclusions:

- Any claims arising from excessive speed (the limit is 4mph)
- Damage arising from negligence, malicious or intentional damage to the boat, its inventory, third party property, the canal and its structures
- Damage to the rudder, skeg or transmission due to contact with a lock cill
- Returning the boat late and/or in an unclean condition

PETS

With pets travelling for free, this really is a holiday the whole family can enjoy. Just one request from us: we'd appreciate it if you could return the boat in a clean and tidy condition. We also reserve the right to refuse pets or charge for any additional cleaning or repairs required as a result of animals being on board during your holiday. To stay onboard, please make sure that all pets are noted on your booking form.

WI-FI

Free Wi-Fi is now available on all of our boats. Please be aware that the Wi-Fi onboard is not the same as at home and requires a network signal. The amount of data provided at the start of your holiday should be sufficient for browsing or email but not for downloading or streaming.

FOR FURTHER INFORMATION VISIT WWW.ABCBOATHIRE.COM

CONDITIONS OF HIRE

1. Definitions

11. In the Agreement, the following words have the following meanings:

"the Boat Owner" means the person (corporate or otherwise) who owns the boat that is hired to the Hirer under the terms of these Conditions.

"Booking Confirmation" means the written confirmation issued by the Company to You confirming the hire period, price, place of delivery and other key details of the booking.

"Company" means ABC Leisure Group Ltd (trading as ABC Boat Hire of Worcester Marina, Worcester WR1 2RS) who act as agents for the boat owners.

"Conditions" means these inland boat hire conditions.

"Deposit" means the deposit referred to in the Booking Confirmation.

"End Date" means the end date referred to in the Booking Confirmation.

"Force Majeure Event" has the meaning given to it in Condition 21.

"Fuel Deposit" has the meaning given to it in Condition 14.1.

"Hire Period" means the hire period set out in the Booking Confirmation.

"Price" means the price of the boat hire set out in the Booking Confirmation.

"Start Date" means the start date referred to in the Booking Confirmation.

"You" and "Your" means the person or persons named as the hirers in the Booking Confirmation and includes anyone added to the Booking Confirmation as a hirer at a later date, but excludes other members of Your party. If there is more than one of You, each of You will be jointly and severally liable under the Agreement.

2. Agreement to Hire

21. When You request a booking, You are making an offer to hire a boat on these Conditions. Booking requests will only be accepted on the Company booking form over the telephone or, via the Company website.

22. The Agreement will be effective once the Company accepts Your booking and sends You a Booking Confirmation. You may cancel a booking at any time before You receive the Booking Confirmation from the Company. Similarly, the Company may hire the boat to another party at any time before it sends You a Booking Confirmation or if You fail to pay the Deposit.

23. You are responsible for the accuracy of the personal details and any other information supplied in respect of You and Your party. When You receive the Booking Confirmation please check the details carefully and inform the Company immediately if anything is incorrect.

3. Prices and Payment

31. The advertised prices are in pounds sterling (£) and include value added tax (VAT) at the rate applicable on the date of the Booking Confirmation. If after the date of the Booking Confirmation the rate of VAT applicable to Your hire changes and/or any other tax, levy or local authority charge becomes applicable to Your hire, the Company reserves the right to amend the Price accordingly. You enter into this Agreement with the Company acting in its capacity as the disclosed agent of the owner of the boat and the Company performs its obligations under this Agreement on behalf of the owner. The parties acknowledge and agree that the Company is acting for the Boat Owner and is authorised to enter into contracts with Hirers on behalf of Boat Owners and to collect payment from Hirers and to otherwise manage the hiring of boats to Hirers. A booking is a legally binding contract between the Hirer and the Boat Owner. The booking confirmation and booking statement are not VAT invoices.

32. Details of the owner of the boat can be made available upon request, however, any claim claim might have arising out of the terms of this Agreement shall be made against the Company.

33. The Company reserves the right to correct errors in advertised or quoted prices before or at the time of booking and will confirm the correct Price after the booking Confirmation.

34. Subject to Condition 31, the Booking Confirmation sets out the total Price that You must pay to the Company under the Agreement.

35. You are responsible for making all payments due to the Company under the Agreement. Payment is deemed to have been made by You when cleared funds are received in such bank account as the Company nominates in the hire confirmation.

36. You shall pay the Deposit to the Company at the time of the booking request by Credit / Debit Card or bank transfer.

37. You shall pay the balance of the Price, together with the Fuel Deposit not less than 8 weeks before the Start Date. Time of payment is of the essence. Failure to pay the Price by the due date may result in the booking being cancelled and Your liability for payment continuing.

38. For bookings made less than 8 weeks before the Start Date, You must pay the total Price together with the Fuel Deposit immediately following receipt of the Booking Confirmation.

39. The Company may, at its sole discretion, charge interest at 4% per annum over the base rate set by the Bank of England on any amount outstanding under the Agreement from the due date for such amount until the date of its payment in full. Without prejudice to any other term of these Conditions, the Company may cancel Your booking if any amount due under the Agreement is not paid in full by its due date.

4. Your Party

41. Personal agreement and obligations: The Agreement is a personal one between You and the Company on behalf of the boat owner, and Your identity(ies) and the identity of members of Your party are a material factor in the Company's decision to enter into the Agreement. You must be at least 18 years of age at the time of booking and possess the legal capacity to make the booking. You must be authorised by all other members of Your party to enter into the Agreement and accept these Conditions on their behalf. The full names, ages and permanent addresses of all members of Your party must be provided to the Company at the time of booking. All changes in Your party (the addition, substitution or removal of any member of the party) which take place at any time after the Booking Confirmation has been issued (including during the Hire Period) must be communicated in writing and approved by the Company (such approval is subject to these Conditions, but otherwise may not be unreasonably withheld). You are responsible for making all members of Your party aware of the terms of the Agreement.

42. Parties, school or youth groups, and commercial purposes: unless expressly agreed in the Booking Confirmation, the boat may not be used for parties, school or youth groups or for any commercial purpose.

43. Disability and Reduced Mobility: If you or any member of Your party has a disability and/or reduced mobility that may affect Your booking, it is Your responsibility to notify the Company when making the booking or, if such disability and/or reduced mobility becomes apparent after the booking, no later than 48 hours prior to the Start Date. Subject to the foregoing, although the Company has no expertise in this subject matter, the Company will try and advise you as to the suitability of the boat you have chosen to hire and possible alternatives but You acknowledge that certain space restrictions and practical safety considerations apply on board boats which may prevent a person with a disability or reduced mobility from accessing the boat and/or complying with all safety requirements on board the boat and/or You or a member of Your party subsequently becomes disabled or otherwise a person with reduced mobility the Company may not always be able to accommodate their needs. If in the Company's

reasonable opinion it is unable to properly accommodate the needs of the person(s) concerned or You do not accept such alternative arrangements as the Company may offer, the Company may, without liability, treat this as a request to terminate Your booking and Condition 71 shall apply. The Company may require the person(s) concerned to produce a medical certificate certifying that they are fit to participate in the hire of the boat. The Company shall not be liable for any loss or damage caused as a result of a disability and/or reduced mobility, save where such loss or damage is caused by the negligence of the Company and results in death or personal injury.

44. The use of alcohol and illegal drugs: Company's right of immediate cancellation: You must not navigate the boat while You or anyone on board is, or appears to be, under the influence of alcohol or illegal drugs.

Changes Requested By You

5.1 Bookings may only be changed with the written agreement of both parties and in accordance with these Conditions.

5.2 If you wish to change Your booking, the Company will use reasonable endeavours to accommodate such changes, provided that notification is received in writing from You. The Company reserves the right to charge an administration fee of £50 in addition to any increase in the cost of the booking due to such changes. No refund will be given where any agreed changes would otherwise have resulted in a lower Price for Your booking.

6. Cancellation by You

6.1 The Agreement is a legally binding contract and may only be cancelled in accordance with these Conditions. You have no statutory right of cancellation under The Consumer Contracts (Information, Cancellation and Additional Charges) Regulations 2013.

6.2 If You want to cancel the Agreement You must give the Company written notice (by email or such other means as directed by the Company) (the "Cancellation Notice"). The date of receipt of the Cancellation Notice shall be the effective cancellation date.

6.3 In the event of Your cancellation of the Agreement, the Deposit, any insurances and credit card charges are non-refundable and in addition you shall be liable for the following charges dependent on the proximity of your cancellation to the Start Date:

6.3.1 More than 56 days before the Start Date 25% of the hire price, 43-56 days 50% of the hire price, 29-42 days 70% of the hire price, 28-28 days 80% of the hire price and 7 days or less 90% of the hire price

6.3.2 The company suggests that hirers take out Cancellation Protection or other similar protection to cover any losses in the unfortunate event that they are not able to take their holiday.

6.3.3 The company will endeavour to resell the boat following receipt of the cancellation notice. If successful an administration fee of 15% of the hire price will be levied.

7. Cancellation By the Company

71. The Company may at any time by written notice to You terminate the Agreement with immediate effect:

71.1 in accordance with the Agreement;

71.2 in accordance with Condition 8.4;

71.3 If there is a Force Majeure Event which for whatever reason prevents the Company from performing the Agreement.

72. Where the Company terminates the Agreement in accordance with Conditions 71.1 to 71.3, the Company shall, save where otherwise agreed in writing with You, refund the Deposit and all other amounts paid by you and shall have no further liability thereafter.

73. The Company may refuse to hand the boat over to You and/or to possess the boat at any time after the Start Date and in either case terminate the Agreement if:

73.1 You fail to pay any amount due under the Agreement;

73.2 You or any member of Your party cause damage or loss to the boat, its services or facilities; or

73.3 The Company considers that You are, without the Company's prior written approval, using or proposing to use the boat for parties, school or youth group, or commercial purpose;

73.4 the Company considers that You or anyone on board is, or appears to be, under the influence of alcohol or illegal drugs;

73.5 You are unsuitable to take charge of the boat for any reason that may adversely affect the safety of any person or property.

73.6 The Company considers that Your behaviour or the behaviour of anyone in Your party is likely to harm the environment or otherwise spoil the enjoyment and use of the waterways or otherwise harm the comfort or health or of cause offence to other guests; members of staff or waterway users;

73.7 You or any member of Your party (or anyone invited on to the boat by You) has breached or is likely to breach the rules set out under Condition 10.1 or any of Your obligations under the Agreement, any applicable laws and regulations, or any other terms and conditions applicable to the boat which You have been told about.

In the event of termination in accordance with this Condition 73, You shall comply with the Company's request to make the boat safe and secure and thereafter leave it immediately. The Company shall be entitled to retain all amounts paid by you and You will remain liable to pay all other amounts due under the Agreement.

Further, in the event that such amounts are insufficient to cover the Company's losses arising out of such terminations, the Company shall be entitled to claim from You any loss or damage which it suffers.

8. Hire Period, Collection and Return of the Boat

8.1 Subject to Condition 8.7 and save as it may otherwise notify you in writing, the Company will use reasonable endeavours to make the boat available to You between 2.30 p.m. and 5.00 p.m. on the Start Date at the place of handover set out in the Booking Confirmation.

8.2 You must notify the Company of Your estimated arrival time no later than 7 days prior to Your Start Date, and thereafter notify the Company as soon as reasonably possible of any changes to Your estimated arrival time as this may lead to difficulties and delays in making the boat available to You. There will neither be any rebate of the Price for late arrival nor will the Company accept responsibility for any costs which You may incur if You fail to reach the boat before the times specified in Condition 8.7.

8.3 Before You take over the boat, the Company will give You such instructions, demonstrations and trials as are appropriate.

8.4 If the boat is not available on the Start Date for any reason other than the Company's consent (including but not limited to a Force Majeure Event, adverse weather or navigation conditions), damage, mechanical breakdown, late return by previous hirer), the Company may substitute the boat with another boat with similar accommodation by giving You written notice. If no such other boat is available or cannot be provided, the Company may terminate the Agreement.

8.5 The boat must be returned to the location specified on the Booking Confirmation or otherwise notified under Condition 8.7 and vacated by You by 9.30 a.m. on the End Date. It is Your responsibility to allow sufficient time to ensure timely return.

8.6 If You return the boat late or to the wrong place, unless as a result of the Company's breach of the Agreement, You will be liable to pay:

8.6.1 £50 for every hour or part hour of delay in returning the boat to the agreed return point;

8.6.2 any cost incurred by the Company in recovering the boat to agreed return point; and

8.6.3 any other expenses and losses which the Company may incur as a result of the delay including, but not limited to, the loss or cancellation of a subsequent booking.

8.7 The Company reserves the right to change the places of handover and return for operational reasons. The Company will give You written notice of the change as soon as practical and will use reasonable endeavours to do so in sufficient time to allow any necessary re-tenition of Your liner.

9. Insurance and Security Deposit

91. The Company insures the boat and its equipment against physical loss and damage and against public liability risks. You are entitled to any protection that may be afforded by the Company's insurance policy (subject to You paying any applicable policy excesses), but You and members of Your party may become legally liable to the Company or to third parties for loss or damage caused or contributed to by Your acts, omissions or negligence.

9.2 The Company's insurance policy does not cover personal accidents or Your personal belongings and does not cover the theft of any claim. Hirers and their crews are advised to take out their own personal insurance cover.

9.3 Included in the hire price is an accidental damage waiver fee. Accidental damage waiver excludes damage arising from speeding, contact with a lock off causing damage to the rudder, skeg, stem gear or boat, negligence, malicious or intentional damage to the boat. Also excluded is negligence, malicious or intentional damage to other boats and property and the late return of the boat and return of the boat in unclean condition. The Hirer will indemnify the Company and the Boat Owner against all costs, damage, expenses, liability and claim whatsoever arising from the negligence, neglect or default of the Hirer.

10. Safety and other Rules

10.1 You agree to comply with the following rules at all times during the Hire Period:

10.1.1 To ensure that at all times while the boat is being navigated it is not carrying more than a minimum two persons with the minimum age of 18 years old.

10.1.2 Not to tow or be towed other than in exceptional circumstances.

10.1.3 To moor the boat securely.

10.1.4 To lock and secure the boat when away from it.

10.1.5 Not to navigate after sunset or before sunrise.

10.1.6 To observe all speed limits, and not to navigate at a speed which creates a breaking wash or disturbs or inconveniences other waterway users.

10.1.7 Not to race the boat.

10.1.8 Not to bring onto the boat any pets, dinghies, canoes, inflatables, portable heaters, bicycles, vehicles, lighting, electrical tools, electrical appliances (other than razors), electric tools or cooking appliances, inflammable liquids or substances, gas cylinders, barbecues, car batteries, fire arms or any other items which might create dangers or hazards without the Company's prior written permission.

10.1.9 Not to bring onto the boat any electrical medical life support aids.

10.1.10 To allow the boat to be occupied only by the persons named in the Booking Confirmation.

10.1.11 Not to allow to be on the boat at any time more than 12 persons.

10.1.12 To give way to laden or unladen cargo boats, sailing craft, rowing boats and other human propelled craft.

10.1.13 Not to take the boat on to sea or tidal waters. To cruise only on canals and rivers approved by the Company.

10.1.14 Not to have or carry any live boat on the boat.

10.1.15 At all times to observe and abide by all regulations, bye-laws and navigational limits and abide by the instructions and advice of the relevant Navigational Authorities and the Company and their respective officers and employees.

10.2 In addition to such restrictions on navigation as may from time to time be put in place by the competent authorities, for which the Company shall not be liable, the Company reserves the right, without liability, to restrict cruising areas or routes in the light of prevailing weather and navigation conditions.

11. Responsibility for the boat

11.1 You are responsible for the boat, its equipment and contents at all times during the Hire Period. Such responsibility includes the safe and lawful navigation of the boat.

11.2 You must keep the boat, its equipment and contents clean and tidy during the Hire Period.

11.3 You must notify and provide full details to the Company of any breakdown, damage, theft or loss involving the boat as soon as practically possible. You must not undertake or commission any repairs, adjustment or service without the Company's prior written approval.

11.4 In the event of any accident or damage involving the boat or anyone on the boat, You must:

11.4.1 obtain and record the name(s) of any other boat(s) and the names and addresses of any other people involved on the form provided by the Company (when available).

11.4.2 Notify the Company as soon as practically possible and provide full details of the accident and any damage sustained; and

11.4.3 proceed in accordance with such instructions as the Company may reasonably give.

11.5 Although the boat and its equipment are insured against some risks, You remain responsible to the Company for any damage or loss arising from Your breach of the Agreement, Your deliberate acts or omissions, or from Your negligence.

11.6 In the event that the boat is run aground or is otherwise involved in a collision or allision you will be responsible for arranging its refloating or otherwise freeing it from any entanglement, including removing all weed, rope or other matter from the boat's propellers and steering gear and you shall notify the Company of any such incident and keep it informed of developments related to such incident.

12. Rights of Access

12.1 The Company reserves the right at any time to board the boat and access its accommodation to inspect it (including but not limited to where You have complained about the boat). If this happens, the Company will try to give You reasonable notice first, notwithstanding which you agree to allow the Company or its representative(s) or contractor(s) immediate access to the boat at any time.

13. Hirer's Property

13.1 Vehicles may be left entirely at their owner's risk in the Company's car park. The Company will be under no liability for any loss or damage to vehicles or their contents or for Your property on the boat unless caused by the Company's negligence.

13.2 The Company may take such reasonable action as it considers necessary to silence Your car alarm if Your car is left on or adjacent to the Company's premises and to recover the any associated costs from You. This is inclusive of any requirements and obligations under the Motor Vehicle Insurance Act 1993 and/or under the Clean Neighbourhoods and Environment Act 2005 and/or any other relevant legislation.

13.3 The Company will use reasonable endeavours to return to You any of Your property which it finds on the boat or otherwise on the Company's premises, provided that You notify the Company of any lost property promptly after that You either arrange for its collection or agree to pre-pay for any postage and packing. Property not claimed within 2 months from the End Date may be disposed of by the Company.

14. Fuel

14.1 The boat will be handed over with a full fuel tank on the Start Date. The Price is exclusive of the cost of fuel and you will pay a fuel deposit in the amount set out in the Booking Confirmation on taking delivery of the boat (the "Fuel Deposit") which shall be refunded on the End Date less the cost of any fuel required to

re-fill the boat's tank.

15. Pets

15.1 No pets are allowed on the boat except those (i) identified in the Booking Confirmation or (ii) to which the Company subsequently gives written permission.

15.2 All pets must be properly house trained or caged as appropriate, must never be left unattended, and shall not be allowed on bedding or chairs. You must provide any pet baskets or blankets.

15.3 Pets and pet damage are not covered under the Company's insurance policy and You will be liable for any damage or loss caused by them.

16. Inventory

16.1 You will be required to sign the inventory on taking the boat over. Any shortcomings discovered during the Hire Period must be notified to the Company as soon as practically possible so as to afford the Company the opportunity to rectify that shortcoming. You will be responsible for the cost of replacing or repairing any items on the inventory which are missing or damaged at the end of the Hire Period.

17. Wi-Fi

17.1 Wi-Fi offered on our boats relies upon mobile network cover to operate and therefore cannot be guaranteed or relied upon. Free data usage limits apply. The Company cannot be held responsible for any interruption to the service as a result of poor signal or failure of the equipment.

18. Exclusion and Limitation of Liability

18.1 The Company shall not be liable for any loss, cost or expense whatsoever suffered by You or any member of Your party (including but not limited to loss or damage to any person's property and consequential or indirect loss) and howsoever arising, including without limitation caused by:

18.1.1 non-fulfilment, interruption or delay to the booking;

18.1.2 breakdowns, mechanical problems, latent defects, damage to the boat or other property;

18.1.3 restrictions on cruising, obstructions, repairs, damage or closure of waterways, non availability of routes, navigational works, storms, floods, droughts, ice, shortage of water or other weather or climatic conditions; or

18.1.4 rationing, shortage or non availability of fuel.

18.2 Other than in respect of claims which cannot be excluded or limited at law (such as claims for death or personal injury), the Company's total liability to You and any person claiming through You in respect of all claims which may arise under or in connection with the Agreement will be limited in aggregate to the Price actually paid by You to the Company in respect of the Agreement in question.

18.3 Nothing in these Conditions affects Your statutory rights. In the event of a conflict between the Agreement and any consumer protection legislation conferred upon you, such consumer protection legislation shall prevail. In the event of a conflict between these Conditions and the Booking Confirmation, the Booking Confirmation shall prevail.

19. Brochures

The specifications of boats, their accommodation, facilities and equipment in the brochure are intended as a general guide and the Company shall not be liable in the event of any insubstantial differences in the boats supplied. Boats within classes may differ, colours may vary, layout plans are for guidance only and are not to scale and boats may have steps which are not shown.

20. Complaints

20.1 If you wish to make a complaint to the Company regarding Your booking, You may do so by post or email within 30 days of the End Date. The Company has a procedure to handle complaints promptly. If You fail to make Your complaint within 30 days of the End Date, this may affect Your entitlement to claim compensation (if any).

21. Third Parties

A person who is not a party to the Agreement will have no right under the Contracts (Rights of Third Parties) Act 1999 to enforce any term of the Agreement.

22. Acts beyond the parties' control

22.1 The Company will neither be in breach of the Agreement nor liable for delay in performing, or failure to perform, any of its obligations under the Agreement if such delay or failure result from events, circumstances or causes beyond its reasonable control, including, without limitation, acts of God, flood, drought or other natural disaster, epidemic or pandemic, civil commotion or riots; any law or any action taken by a government or public authority (including without limitation failing to grant a necessary licence or consent); collapse of buildings, fire, explosion or accident; any labour or trade dispute, strikes, industrial action or lockouts; interruption or failure of utility service; limitations, restrictions or prohibitions by relevant authorities on the use of relevant waterways or boats ("Force Majeure Event").

22.2 If You are unable to take up Your booking because of UK government legislation, regulation or guidance or, You may:

22.2.1 subject always to availability, transfer Your booking to a later date, free of any administration charges. You will have to pay any difference in price if the cost of the new booking is higher or be reimbursed the difference if the cost of the new booking is lower; or

22.2.2 request a voucher with a redemption value equal to the amount previously paid by You for the booking – the voucher terms and conditions will be available to You before You make Your choice under this Condition; or

22.2.3 If the Company is required by law to provide it, obtain a refund of any amount already paid by You for the booking and cancel Your booking.

22.3 If You have to cut short Your booking because of UK government legislation, regulation or guidance, You will be entitled to a pro rata refund of the Price (to the extent it has been paid), but any insurance premiums, booking fees or administration charges paid will not be refundable. You will have to contact the Company in order to access these options.

23. Data Protection

The Company will only use Your personal information in accordance with its privacy policy. You can find the Company's privacy policy at <https://www.abcboats.com/privacy-policy/>

24. Law and Jurisdiction

24.1 The Agreement and any non-contractual obligations arising out of or in connection with the Agreement are governed by and shall be construed in accordance with English law.

24.2 Subject to Condition 24 below, You and the Company irrevocably agree that any and every dispute arising out of or in connection with the Agreement (or with any non-contractual obligations) will be subject to the exclusive jurisdiction of the English courts.

25. Dispute Resolution

Disputes arising out of or in connection with the Agreement, when they cannot be resolved by negotiation, may, with the written agreement of the Parties, first be submitted to mediation under British Marine's Dispute Resolution Scheme. Details of the Scheme are available to current British Marine members or on request from British Marine and/or on British Marine's member website.

BOOK YOUR CANAL BOATING BREAK TODAY

CALL US ON 0330 333 0590 OR EMAIL INFO@ABCBOATHIRE.COM OR VISIT WWW.ABCBOATHIRE.COM

MAPS AND GUIDES

The following is a selection of the most popular guides available. For details of the guide most suited to the area you intend to cruise, the numbers shown against this list are indicated on the feature route pages for each base (see pages 8-39). These may be purchased online at www.chandlerydirect.com or purchased at the start of the holiday at the marina.

NICHOLSON'S GUIDES

Ring-bound, A5 guide-books with detailed narrative information about the area surrounding the waterways route. Information is given regarding the history of the area, pubs, restaurants, boatyards and places of interest, including telephone numbers and opening hours where applicable. Each map section shown is a genuine Ordnance Survey extract with the waterway route and features highlighted. Set into chapters covering each waterway, a general introduction at the start of the chapter gives more specific navigational information.

N1	Grand Union, Oxford & the South East
N2	Severn, Avon & Birmingham
N3	Birmingham & the Heart of England
N4	Four Counties & the Welsh Canals
N5	North West & the Pennines
N6	Nottingham, York & the North East
N7	River Thames & the Southern Waterways

LOCKMASTER MAPS

Black and white flat maps (sent rolled in a tube) measuring approximately 40cm x 48cm (16" x 19") detailing the route of the canal, canal features (bridges, locks etc) and the location of towns along the route. These maps give a good overview of areas of canals such as 'ring' routes.

L5	The Cheshire Ring
L8	Chester & the Llangollen
L10	The Four Counties Ring
L12	Black Country Canals
L13	The Warwickshire Ring
L14	East Midland Canals
L15	The Avon Ring
L16	The Stourport Ring
L17	From Avon to Thames
L18	Grand Union South - Braunston to Brentford
L20	Kenet & Avon Waters
L22	London's Waterways
L23	Southern Counties Waterways
L24	Monmouthshire & Brecon Canal
L25	Lockmaster Fenland Waters
L26	River Great Ouse

PEARSON'S GUIDES

A5 guidebooks with a similar level of information to the Nicholson's guides. Each map page details the facilities immediately near to the canal or waterway, with a summary given of the number of miles and locks covered by that page, together with the approximate cruising time to be allowed. Popular with first-timers and experienced boaters alike.

P1	Stourport & Black Country Rings including BCN
P2	Severn & Avon
P3	Welsh Waters
P5	Four Counties & Cheshire Rings
P6	South Midlands
P7	Oxford & Grand Union
P8	Kenet & Avon & River Thames
P9	Leeds & Liverpool

HERON & GEO PROJECTS MAPS & GUIDES

Coloured fold-out maps detailing the route of the canal or waterway, extending to significant villages and towns up to about 5 miles from the waterway. Each map includes an overall introduction to the waterway, with additional paragraphs detailing history, sites of interest and significant canal features.

H1	Kenet & Avon Canal
H2	Llangollen & Montgomery Canals

IMRAY GUIDES

Map of the Inland Waterway of Scotland.

IM1	The River Nene
IM2	Fenland Waterways
IM3	The River Great Ouse and Tributaries

WATERWAYS ROUTES

A5 cruising map in colour booklet detailing the route of the canal, canal features (bridges, locks etc) and the location of towns along the route.

D1	The Droitwich Canals
-----------	----------------------

SAFETY INFORMATION





(Free publications - charge only for p&p).

BDVD	The Boaters DVD (UK only)
-------------	---------------------------

Note: A link to a basic boat handling video will be emailed out to you 8 weeks prior to the start of your holiday and will be available on your boat.

BOOKING FORM 2026

PLEASE COMPLETE IN BLOCK CAPITALS. CUT ALONG DOTTED LINE AND RETURN TO: PO BOX 232, WORCESTER WR1 2SD

Mr	Mrs	Miss	Ms	Initial:	Surname:
Address:					
Postcode:					
Day Phone:					
Evening Phone:					
Mobile Phone:					
Email Address:					
How did you hear about us?					
Canal Boat Experience?				<input type="checkbox"/> Yes <input type="checkbox"/> No	
Booking Reference:				Base:	
Boat Class:					
Start Date:				No. of nights:	
Names				Age if under 18	
1					
2					
3					
4					
5					
6					
7					
8					
9					
10					
11					
12					
Credit Cards					
<input type="checkbox"/> Visa <input type="checkbox"/> Mastercard					
 					
Debit Cards					
<input type="checkbox"/> Visa Debit <input type="checkbox"/> Maestro/Switch					
 					

If making payment from overseas by credit or debit card, you will have the ability to pay in your local currency.

1. Please charge my initial payment to my credit/debit card now. ☐
2. Please charge the full cost of my holiday now. ☐
3. Easy-Pay (see page 3 for details). ☐

In order to reduce our environmental impact we will, where possible, communicate with you via the email provided.

UK Contact:

Tel: 0330 333 0590

Overseas Contact:

Tel: +44 1905 610660

Layout ☐ Double Berth (Low level) ☐ Single Berth (Low level) ☐ Optional High Level Berth (Where possible) ☐ Cot Side (Where possible)

Would you like us to set up a personalised ABC App for you? ☐ Yes ☐ No

A	Basic Brochure Holiday Price (p.63-64)	
B	Offers/Discounts/Tokens claimed	
C	Additional Pets (p.62)	
D	Green Donation (suggested £5.00) (p.60)	
E	Fuel Deposit (p.62) (£110 per week & £60 per short break)	
PAYMENTS REQUIRED NOW		
*A 25% Deposit of holiday price (A)		
DEPOSIT TOTAL		*

I DECLARE THAT I AM 18 YEARS OF AGE OR OVER. I AGREE TO BE HELD RESPONSIBLE FOR THE BALANCE SHOWN ON MY BOOKING CONFIRMATION. I HAVE READ AND AGREE TO BE BOUND BY THE TERMS AND CONDITIONS OF HIRE IN THIS BROCHURE.

WHEN PAYING BY CARD I AUTHORISE THE COMPANY TO CHARGE MY ACCOUNT FOR THE PAYMENT SHOWN HERE. I ALSO CERTIFY THAT I AM THE PERSON BOOKING THE HOLIDAY AND THAT THE ADDRESS IS THE SAME AS FOR MY CREDIT CARD.

Signature: _____ Date: _____

Cardholder's Name: _____

Your Card No.: _____

Valid from: _____ Valid to: _____ Issue No. _____ Security Code _____

Payments by cheque/postal order should be made out to ABC Leisure Group.



ABC BOAT HIRE

Further information & up-to-date availability:

VISIT: WWW.ABCBOATHIRE.COM

EMAIL: INFO@ABCBOATHIRE.COM

Local Rate: 0330 333 0590 Overseas: +44 1905 610660

